

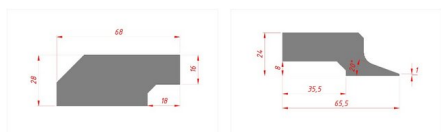
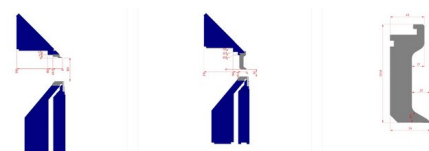
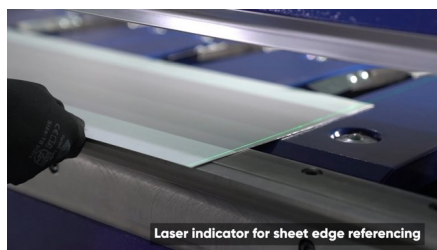
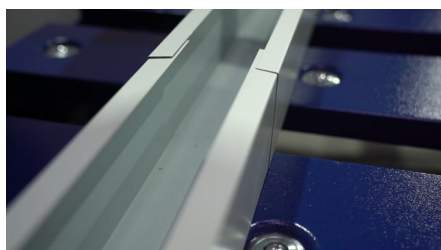
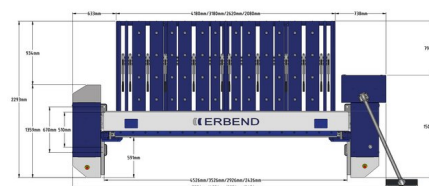
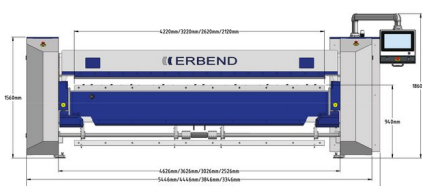
Motorized folding machine MFB 2525

Model	MFB 2525
Brand	<u>ERBEND</u>
Condition	new
Bending length	2550 mm
Sheet thickness (420 N/mm ²)	2.5 mm
Origin	Türkiye

⌚ approx. 10 weeks from order

€ 61.800,00

Leasing*: € 1.168,02



General characteristics

Bending length	2550 mm
Sheet thickness (420 N/mm ²)	2.5 mm
Max. thickness - stainless steel	1.5 mm
Max. thickness - aluminium	3.5 mm
Antrieb	Motorized
Back gauge	1000 mm

Dimensions and weight

Hesse + Co Maschinenfabrik GmbH
IZ Nö Süd, Straße 4, Objekt 8
A-2351 Wiener Neudorf

www.hesse-maschinen.com

T [+43-2236-63870-0](tel:+432236638700)
F [+43-2236-63662](tel:+43223663662)
office@hesse-maschinen.com

Length	3830 mm
Width	2200 mm
Height	1900 mm
Weight	4050 kg

Description

CNC control with tabular programming

- 15,6" touchscreen controller on swivel arm
- tabular programming by entering the axes values
- open or drop hemming function
- multi radius bending function as by pressing or by bending
- programming of material quality, thickness, spring back, bending correction and creating a data base for every type of material, thickness and length
- piece counter
- autorisation with password
- 128GB HDD allows almost unlimited data storage
- remote service connection via WLAN
- detailed alarm, tool and paramter page

Motorized drive (servo motors) of the upper and bending beam (Z and Y axes)

Motorized back stop (X axis) with servo drive, 1000 mm, rectangular configuration, with ball rollers in the sheet metal inserts

Upper beam opening 220 mm (without tools)

Manual bending beam adjustment 35 mm

Upper beam with 45° geometry Upper tool 20° with R1, undivided

2 pcs. Bending beam rail (7 or 10 mm, 15 or 25 mm)

Front light barrier protection

3-way foot pedal

Options:

Sectioned goose neck upper tool

Pneumatic tool clamping

Sectioned lower and bending tool

Servo drive for the bending beam

Manual crowning system

Second foot pedal

Side stop

Rear light barrier protection

2D or 3D graphic control
PC software
Special Omega geometry for lower and bending tool
Conical back stop
Back stop extension
Vacuum holder

Further information

Brochures

- [erbind-katalog-2026.pdf](#)

Product video

- [bulzcabaluu.youtube](#)

Notice

Prices ex location, excluding VAT.

The [General Terms and Conditions of Delivery](#) of the Austrian Association of the Machine and Steel Construction Industry apply.

We only sell under retention of title, the goods remain our unrestricted property until they have been paid for in full.

Price changes and errors excepted.

* Monthly net leasing rate, leasing period 60 months, no down payment, 5% residual value, subject to a positive credit check. The leasing conditions of [GRENKELEASING GmbH](#) apply. Valid for lessees based in Austria.