

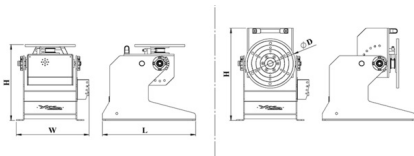
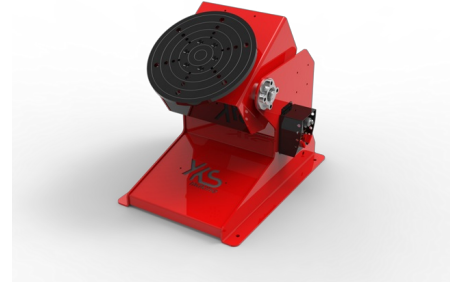
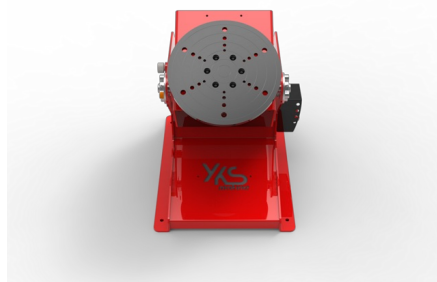
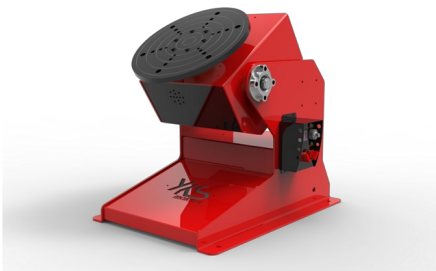
## Welding Rotatingtable YKSPOZ 500

Model	YKSPOZ 500
Brand	<u>YKS</u>
Condition	new
Load capacity	500 kg
Table diameter	800 mm
Origin	Türkiye

⌚ approx. 3-6 weeks from placing order

**€ 7.730,00**

Leasing\*: € 149,19



## General characteristics

Load capacity	500 kg
Rated center of gravity	150 mm
Rated eccentricity	150 mm
Rated tilt torque	360 kgm
Voltage / Frequency	230 / 50 V / Hz
Rotation motor	0.37 kW
Tilting motor	0.37 kW
Rotation speed	0.1 - 3 U/min
Tilting time	45 s
Table diameter	800 mm
T-slots	M20X6 mm
Height of rotating center at horizontal rotation	640 mm

## Dimensions and weight

### Description

The positioners are available in standard sizes for load capacities from 150 kg to 3,000 kg.

The frame is optimally designed for rotation and tilting operations.

The positioners consist of a motor, gearbox, table tilting system, steel gears, and control system and are structurally optimally protected.

For heavy workpieces, the positioners are mounted on the floor.

The tables have radial T-slots that enable quick clamping of the workpieces.

Tilting and rotation are controlled by steel gears.

For safety, the positioner is equipped with a reduction gear that holds the table in the desired position.

Foot pedal

Cable for signal to welder

Touchpanel for following functions:

- rotation speed
- operating modi (manual, segmentcycle, full circle)

#### Option:

Pneumatic centering attachment

## Further information

### Brochures

- [Katalog YKS Schweißdrehtische und Behälterdrehvorrichtungen](#)

## Notice

Prices ex location, excluding VAT.

The [General Terms and Conditions of Delivery](#) of the Austrian Association of the Machine and Steel Construction Industry apply.

We only sell under retention of title, the goods remain our unrestricted property until they have been paid for in full.

Price changes and errors excepted.

\* Monthly net leasing rate, leasing period 60 months, no down payment, 5% residual value, subject to a positive credit check. The leasing conditions of [GRENKELEASING GmbH](#) apply. Valid for lessees based in Austria.