

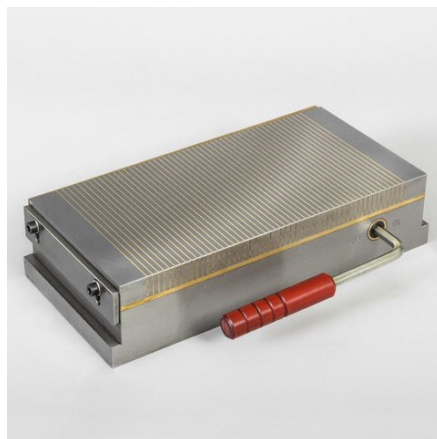
Flat grinding machine / Cup grinding machine C.S.E. 500

Model	C.S.E. 500
Brand	<u>O.M.N.</u>
Condition	new
Table	500x160 mm
Grinding area	350x150 mm
Origin	Italy

⌚ approx. 2 weeks from order

€ 17.940,00

Leasing*: € 344,45



General characteristics

Grinding length	350 mm
Distance spindle - table	300 mm
Table	500x160 mm
Grinding area	350x150 mm
Magnetic table	300x150x55 mm
Spindle revs	2800 rpm
Spindle motor	3 kW
Grinding wheel dimensions	Dm. 200x78x78 mm

Dimensions and weight

Hesse + Co Maschinenfabrik GmbH
IZ Nö Süd, Straße 4, Objekt 8
A-2351 Wiener Neudorf

www.hesse-maschinen.com

T [+43-2236-63870-0](tel:+43-2236-63870-0)
F [+43-2236-63662](tel:+43-2236-63662)
office@hesse-maschinen.com

Length	1020 mm
Width	820 mm
Height	2170 mm
Weight	440 kg

Description

This Grinding machine with fixed table derives from the model R.V. 500 but it differs from it as it is equipped with a long column supported by four bearings and is opportunely stiffened by a sturdy column support.

This Surface grinding machine, due to its stiffness and geometrical stability, is highly suitable for grinding with precision pieces of notable height: single or mass-produced die-shop components, moulds, punches, gears and others.

Moreover, the nuts of the vertical translation screw and the dowels to realign the wheel motor to the axis, equipping this model of Grinding machine with fixed table, allow preserving perfect work conditions over the years, too.

CAST IRON BED to maintain the geometric stability of the grinding machine in time, too.

CAST IRON COLUMN, protected by bellows and supported by four adjustable precision bearings, broadly sized for this type of grinding machine with fixed table.

Three-phase MOTOR air-cooled by double jacket, to prevent the overheating of the grinding machine motor during continuous machining and to keep the temperature of the motor shaft and of bearings constant.

Hardened, ground and dynamically balanced SHAFT, supported by precision ball bearings, widely sized for this type of grinding machine with fixed table and self-adjusting by means of springs for the backlash preload, to absorb thermal expansions.

VERTICAL TRANSLATION SCREW supported by opposite and adjustable ball bearings, with apt motion for maintaining, in this model of grinding machine with fixed table, the wheel work field free from hindrances and for avoiding dust depositions.

Metal BELLOWS for a better protection of the vertical translation screw of the grinding machine.

Opposite bronze NUTS, for the recovery of the eventual wear in time of the vertical translation screw of the grinding machine with fixed table.

REGISTRATION DOWELS to re-align the wheel motor of the grinding machine to the axis, obtaining parallel surfaces also in time.

HANDWHEEL of the grinding machine, supported by three bearings and engaged on the screw by means of a pair of helical gears, equipped with graduated drum, supported by a trust bearing, for a stock removal of mm 0.01 – 0.02 – 0.03 for each single pass; the rapid feed per handwheel turn is mm 2.

KNOB WITH JACK, for the programmable micrometric feed of mm 0.01 – 0.02 – 0.03 – 0.04 per pulse,

which allows a simple use by avoiding the constant increment control.

SLOT to permit the maximum use in height of the work field of the grinding machine wheel

and to clamp non-magnetic parts and accessories such as: magnetic chuck, self-centering chuck and squares.

Low-voltage CONTROLS, protection, indicator light and all requisites to comply with safety

and conformity regulations provided for this type of grinding machine with fixed table.

HANDLES, SHAPES AND SIZES of the grinding machine with fixed table designed

to meet the current ergonomic recommendations for work.

With following accessories:

Magnetic chuck 300 x 150 mm

Wheel flange and cup wheel

Semiautomatic dresser with diamond

Coolant system

Operating manual in German or Italian

Further information

Brochures

- [OMN Prospekt](#)

Notice

Prices ex location, excluding VAT.

The [General Terms and Conditions of Delivery](#) of the Austrian Association of the Machine and Steel Construction Industry apply.

We only sell under retention of title, the goods remain our unrestricted property until they have been paid for in full.

Price changes and errors excepted.

* Monthly net leasing rate, leasing period 60 months, no down payment, 5% residual value, subject to a positive credit check. The leasing conditions of [GRENKELEASING GmbH](#) apply. Valid for lessees based in Austria.