



FMG-B12/16 Series

Traveling Column, Highly Efficient
Profile Grinder

Better flexibility for complex
grinding



CHEVALIER[®]
Grinding / Turning / Milling

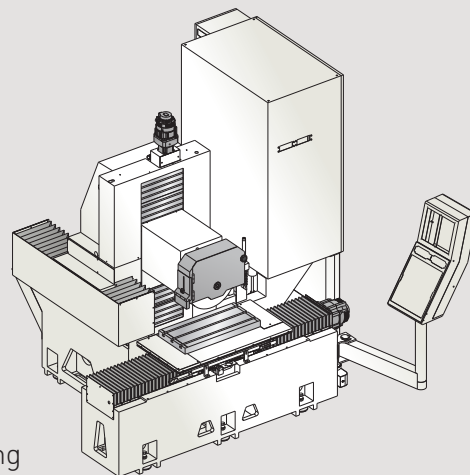
We shape your ideas.™

Performance. Precision. Reliability. Affordability.

These are the driving forces behind the design of our new Traveling Column High-Efficiency Profile Grinding Machine. They're the standards required by the medical, automotive, mining, semiconductor, aerospace and job shop industries in order to meet current grinding demands and pave the way to smart manufacturing.

Chevalier achieved greater precision by placing the high waist traveling column on the same level as the spindle, creating a solid, rigid machine structure that minimizes vibration, movement, and displacement. Axial movements are programmable in increments of 0.001 mm (0.0001") with little effort.

Our grinding machines are designed to be user friendly. Now, our exclusive next generation SMART iControl incorporates production efficiency, which simplifies operation procedures and greatly enhances the performance of Chevalier CNC grinders. Combined with TaskLink+, it allows operators to easily create their own programs for generating complex grinding tasks in a single cycle.

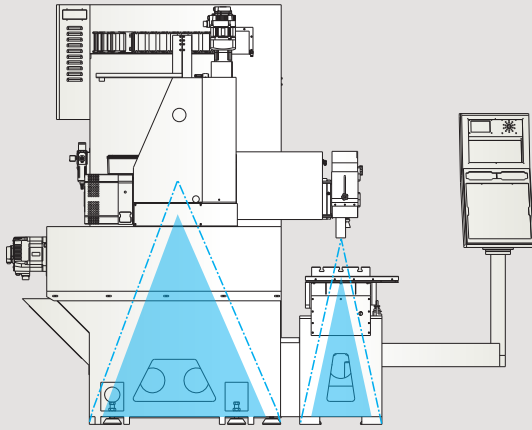


The FMG-B1224 is shown with optional accessories.

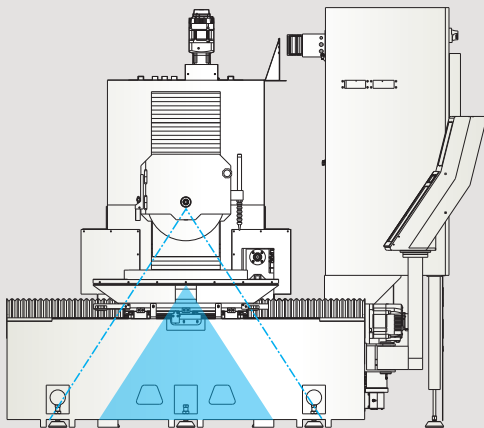
Key Features and Benefits

Optimized structure

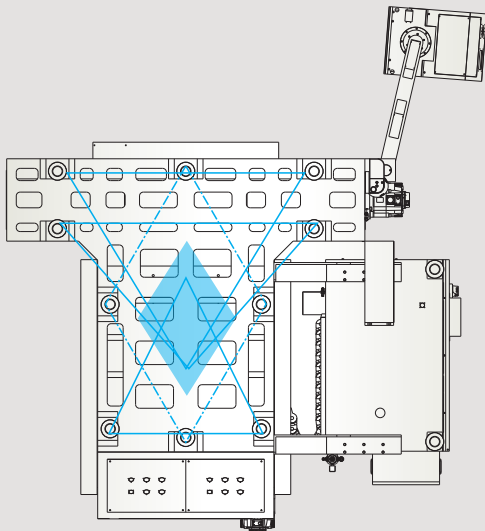
Chevalier's R&D team used precision analysis to design a rigid machine structure that incorporates a traveling column to effectively improve stability for high grinding efficiency and reliable machining accuracy.



To prevent vibration and ensure machining accuracy, the high-strength rigid design is built to withstand the maximum force caused by deformation.



By analyzing processing requirements and experience, we optimized the machine's structural integrity to ensure high performance.



The FMG-B1224 is shown with optional accessories.



Full enclosure design

The fully enclosed design meets safety and environmental regulations by preventing cutting coolant splashing and oil mist dissipation while fully protecting the operator from grinding dangers.



Control Features and Benefits

The Next Generation of SMART iControl

Now, our exclusive next generation SMART iControl delivers a bounty of benefits. Users no longer need to write complicated programs and memorize detailed variables. Instead, they can complete huge, complex processing programs and perform intricate grinding. The powerful computing ability enhances the HMI for better grinding accuracy and with data analysis from network connectivity allows managers to improve the production process and increase output.

The SMART iControl's conversational programming eliminates complicated programming codes

The SMART iControl supports M3 serial communication servo systems, a communication bandwidth increased to 100Mbps and support for 24-bit resolution to improve reading speed and processing smoothness.

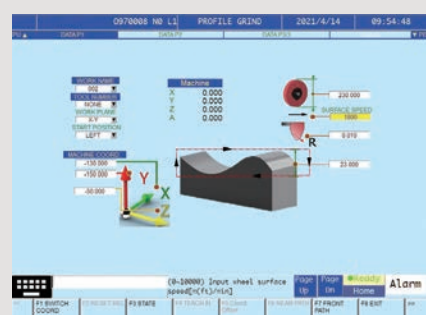
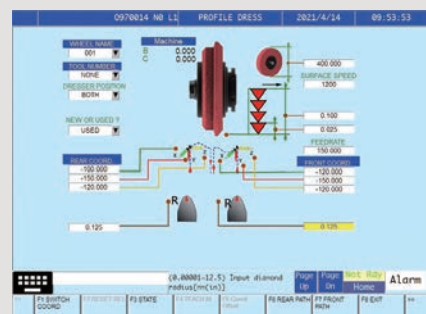
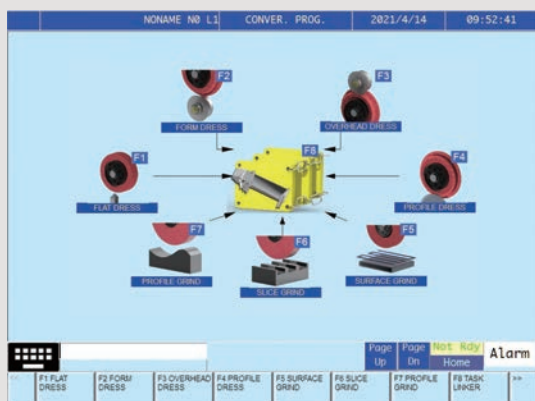
High computing capabilities of 2,000 single blocks per second produces high-precision smoothness, high-precision contour control, machining path smoothing, multigroup working conditions, and quick parameter setting to significantly improve the grinding machine's accuracy and flatness.

Up to eight CNC axes can be controlled for multi-function machining requirements. A single axis group can connect up to four axes or four/five axes for complex forming machining.

The SRI interface communication IO module adds extra IO points (optional) and connects other automation equipment to meet future automation needs.

FMG-B12/16 Series comes standard with a 15" LCD touch screen with HMI.

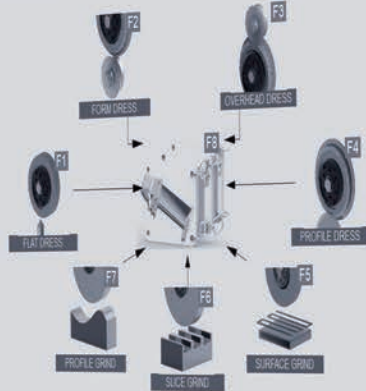
The three-dimensional graphic image display minimizes text descriptions and looks very similar to the actual workpieces.



CHEVALIER

SMART iControl

NO NAME NO L1 COVER, PROG. 2021/4/14 09:52:41



Page Up	Page Dn	Not Key	Home	Alarm				
F1 FLAT DRESS	F2 FORM DRESS	F3 OVERHEAD DRESS	F4 PROFILE DRESS	F5 SURFACE GRIND	F6 SLICE GRIND	F7 PROFILE GRIND	F8 TASK LOWER	>>>

+Z
-X
WA
SAFETY



POS. PROG. INCL. SWAN
PARK. LOCK ALARM HOME

MAGNET

18 18 20 40 700 / min

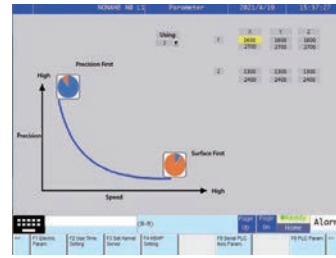
FEEDRATE OVERRIDE
SPINDLE OVERRIDE
EMERGENCY STOP

POWER
RETRACT
E-STOP
HOLD
i HDW

Control Features and Benefits

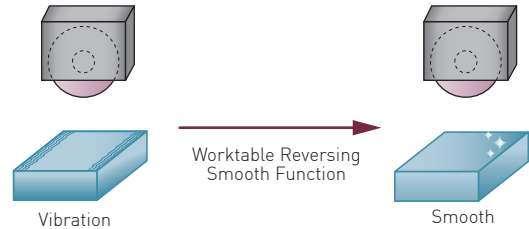
Intelligent grinding assistant system

Sets parameters based on prioritizing the machining process for precision or speed in order to improve application efficiency.



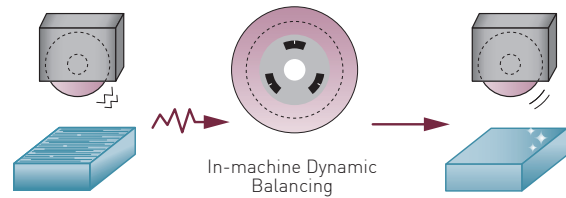
Worktable reversing smoothing function

Low-frequency vibration is suppressed during reciprocating motion to enhance the surface finish of the workpiece and improve efficiency.



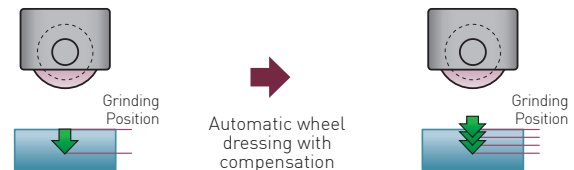
In-machine dynamic balancing

Operator can manually adjust the grinding wheel balance to reduce wheel vibration and eliminate chatter marks to improve grinding quality.



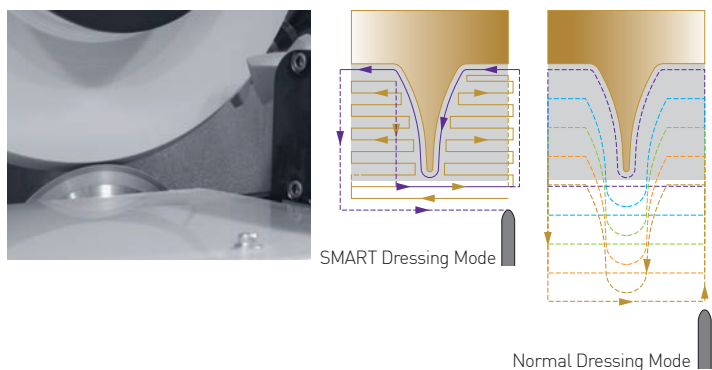
Automatic wheel dressing with compensation

This feature allows the wheel to dress automatically during rough and fine grinding. It enables the machine to reach optimal cutting efficiency and stability regardless of operator experience.



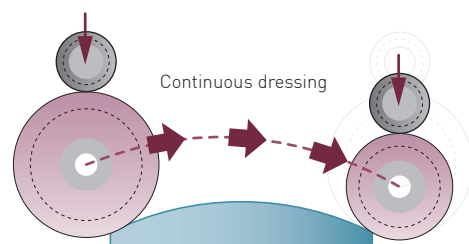
Constant contact dressing mode

A normal dressing mode wastes time by cutting in air. The SMART iControl dressing mode never cuts air because the diamond is in constant contact with the wheel to minimize dress time.

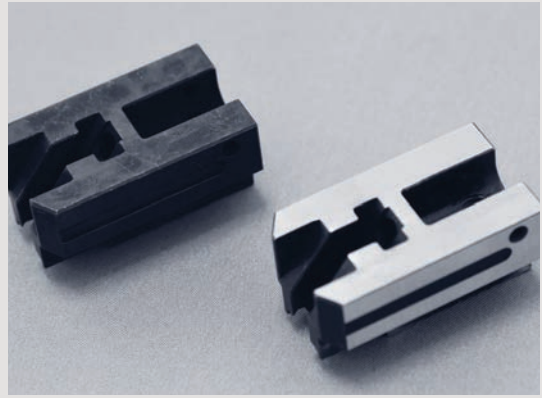
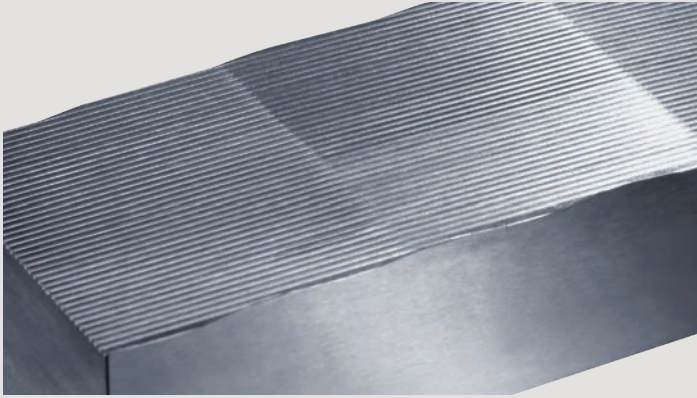


Continuous dressing and compensation function during grinding (optional)

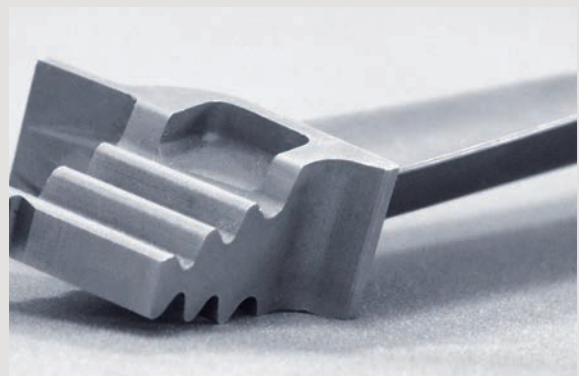
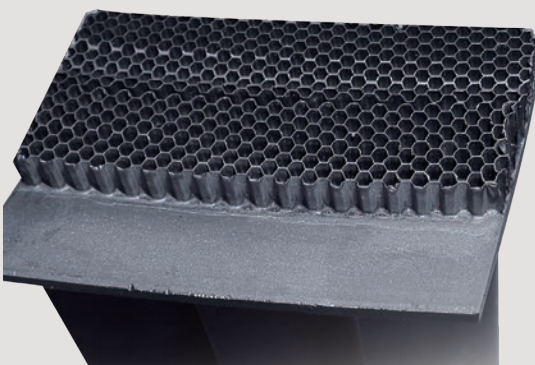
Equipped with overhead dresser for linear and arch continuous dressing and continuous grinding. This prevents workpiece from burning and increases productivity.



Applications



The FMG Series is designed to easily adapt to future needs for job shops, medical, automotive, semiconductor industries and aerospace



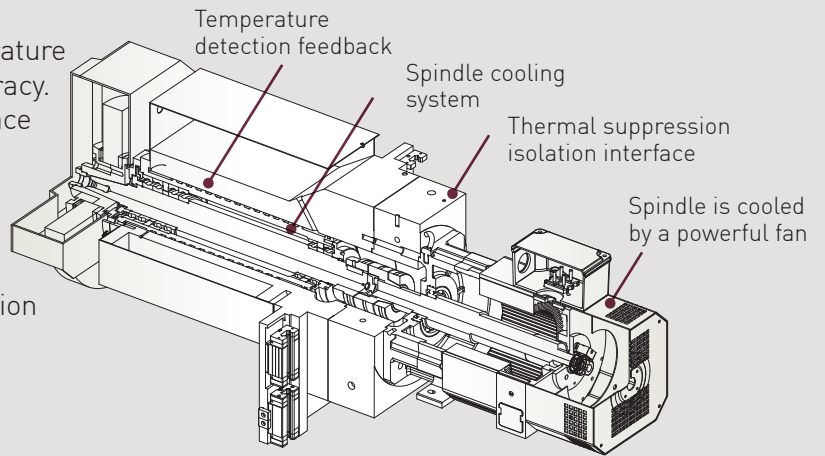
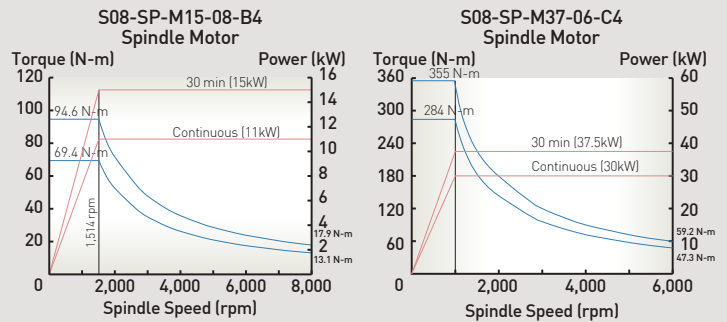
Machine Construction

Spindle

The cartridge-style spindle is suitable for heavy-duty grinding loads. It's supported by six super-precision angular contact bearings (four front pieces and two rear pieces). Runout is within 2 µm. Fully sealed lubrication ensures long life and greater precision.

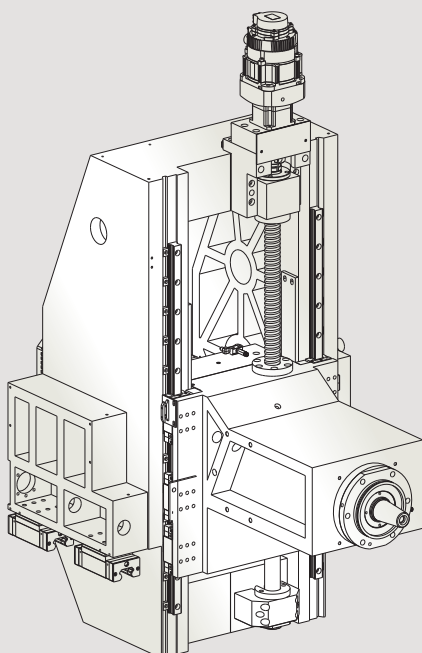
Air cooling the spindle minimizes temperature increases to further ensure spindle accuracy. The thermal suppression isolation interface can reduce the temperature rise to the lowest level, effectively inhibiting spindle expansion.

Maximum spindle horsepower offers an optional 30 kW (40 HP) for high-precision high efficiency profile grinding.

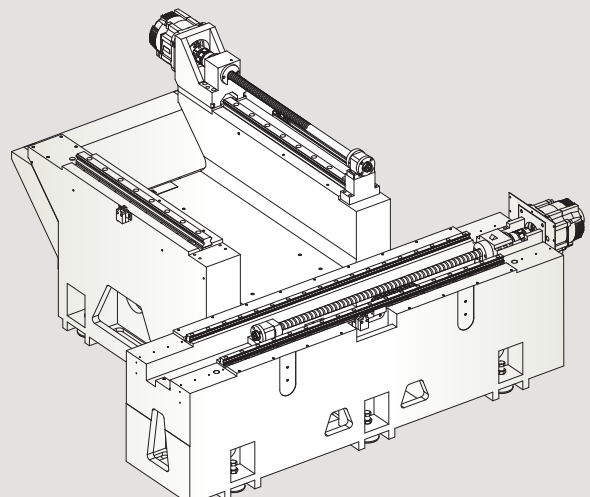


The machine's powerful spindle provides greater accuracy and precision for superior cutting efficiency

The X/Y/Z axis is driven by an AC servo motor and a high-precision ballscrew to maximize control of the table speed and high positioning accuracy.



These traveling column high-efficient profile grinding machine is built with a massive, one-piece rigid machine base with a low center to fully support table travel. All castings have undergone FEM analysis to optimize the mechanical design and minimize the machine's weight. The ergonomic machine structure is optimally designed to provide better grinding efficiency and accuracy.





These traveling column machines offers more value for your investment

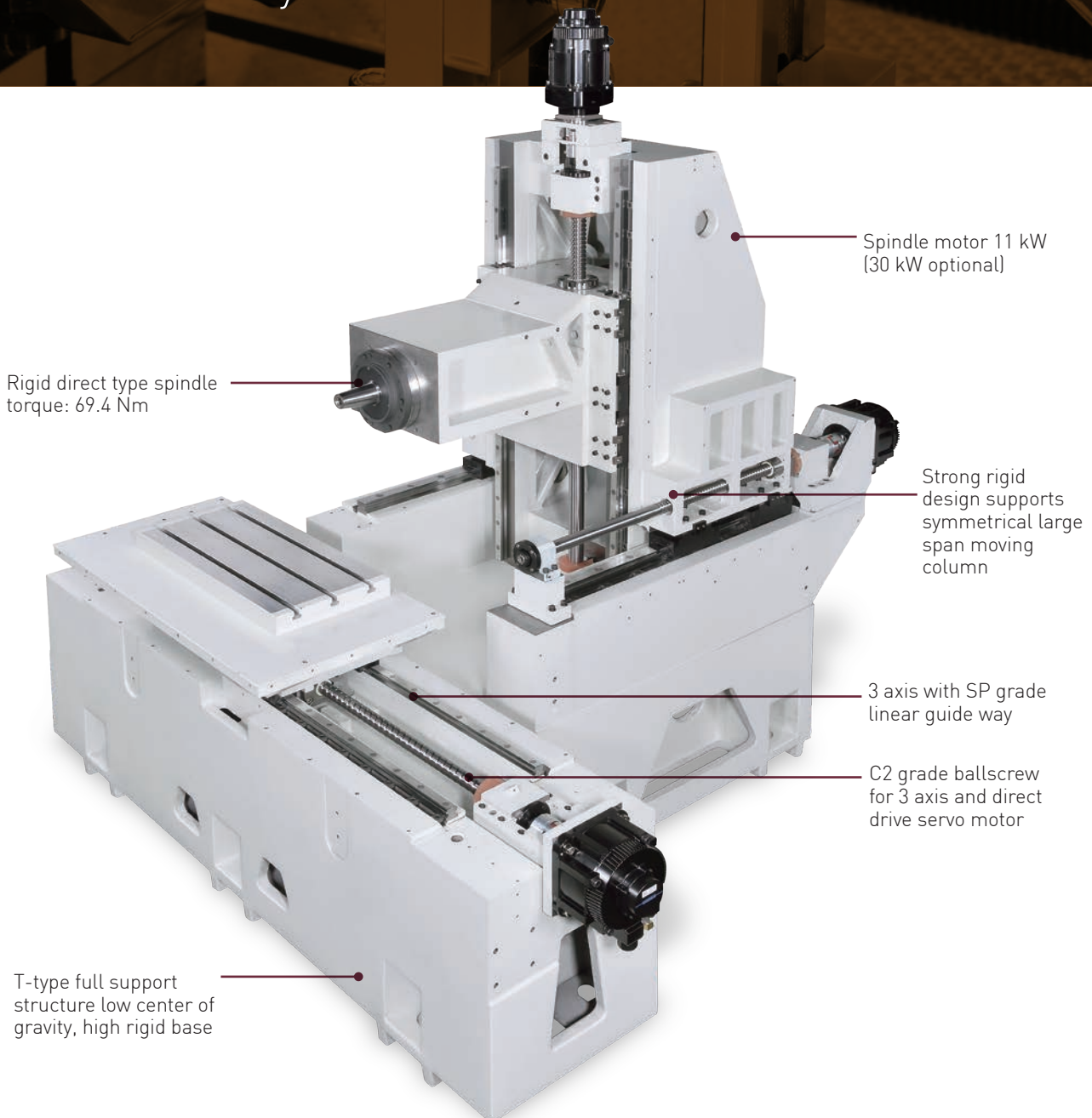
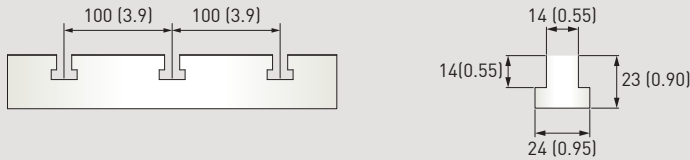
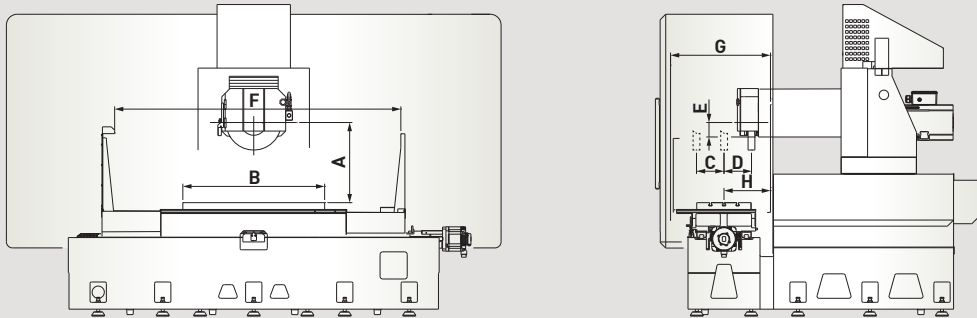


Table and T-Slot Dimensions

Units: mm (")



Max. Working Space



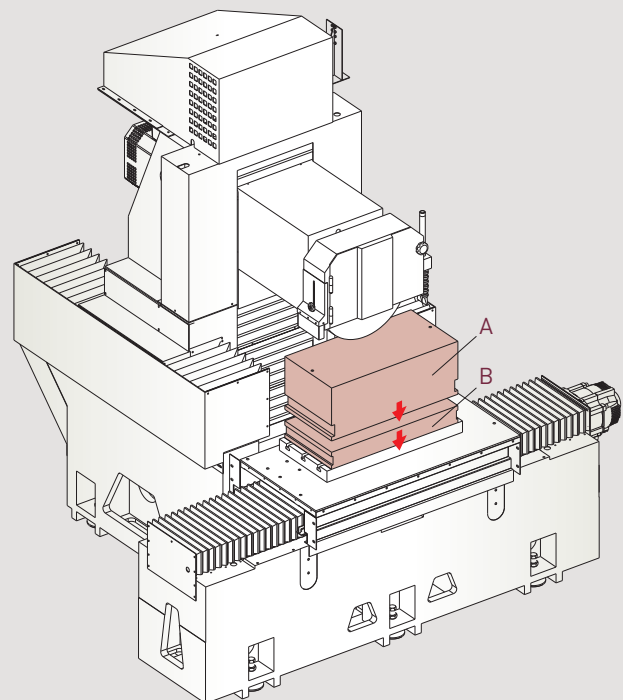
Item	A	B	C	D	E	F	G	H
FMG-B1224	590 (23.2)	600 (23.6)	175 (6.9)	175 (6.9)	106.5 (4.2)	1,650 (65.0)	735 (28.9)	295 (11.6)
FMG-B1640	590 (23.2)	1,000 (39.4)	225 (8.9)	225 (8.9)	106.5 (4.2)	2,100 (82.7)	735 (28.9)	342 (13.5)

Stronger rigidity produces less vibration and smoother movement for years of consistent, reliable operation

Loading Capacity

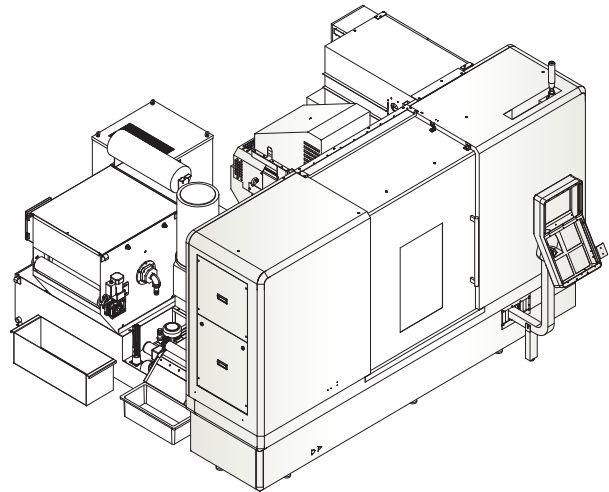
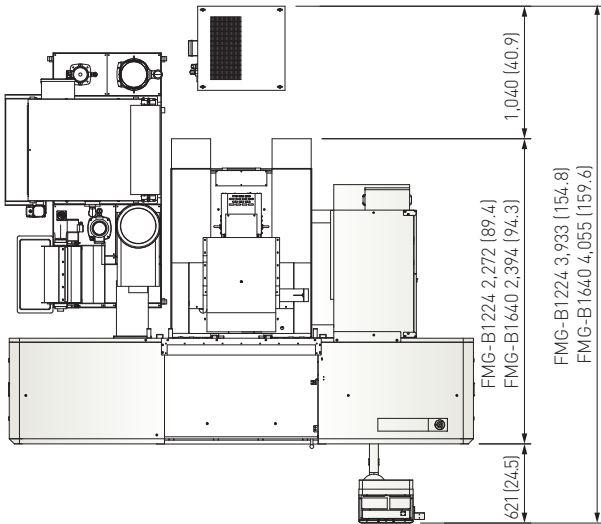
Item	FMG-B1224	FMG-B1640
A	314 kg (692 lbs.)	423 kg (932 lbs.)
B	106 kg (233 lbs.)	247 kg (544 lbs.)
C	420 kg (925 lbs.)	670 kg (1,476 lbs.)

Suggested maximum table loads
 A = Workpiece, B = Chuck, C = A+B

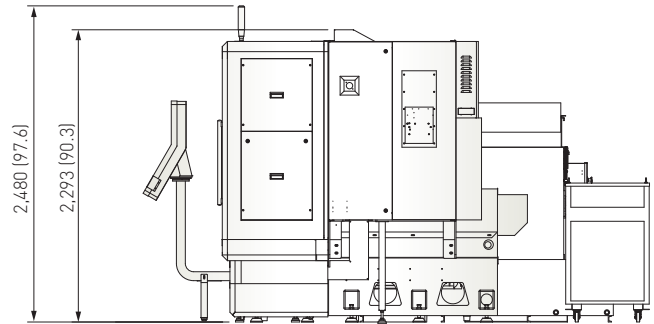
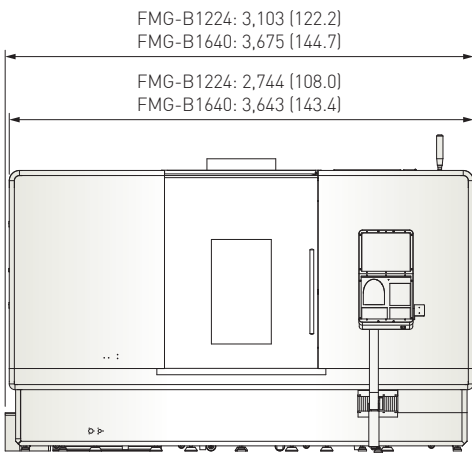


Machine Dimensions

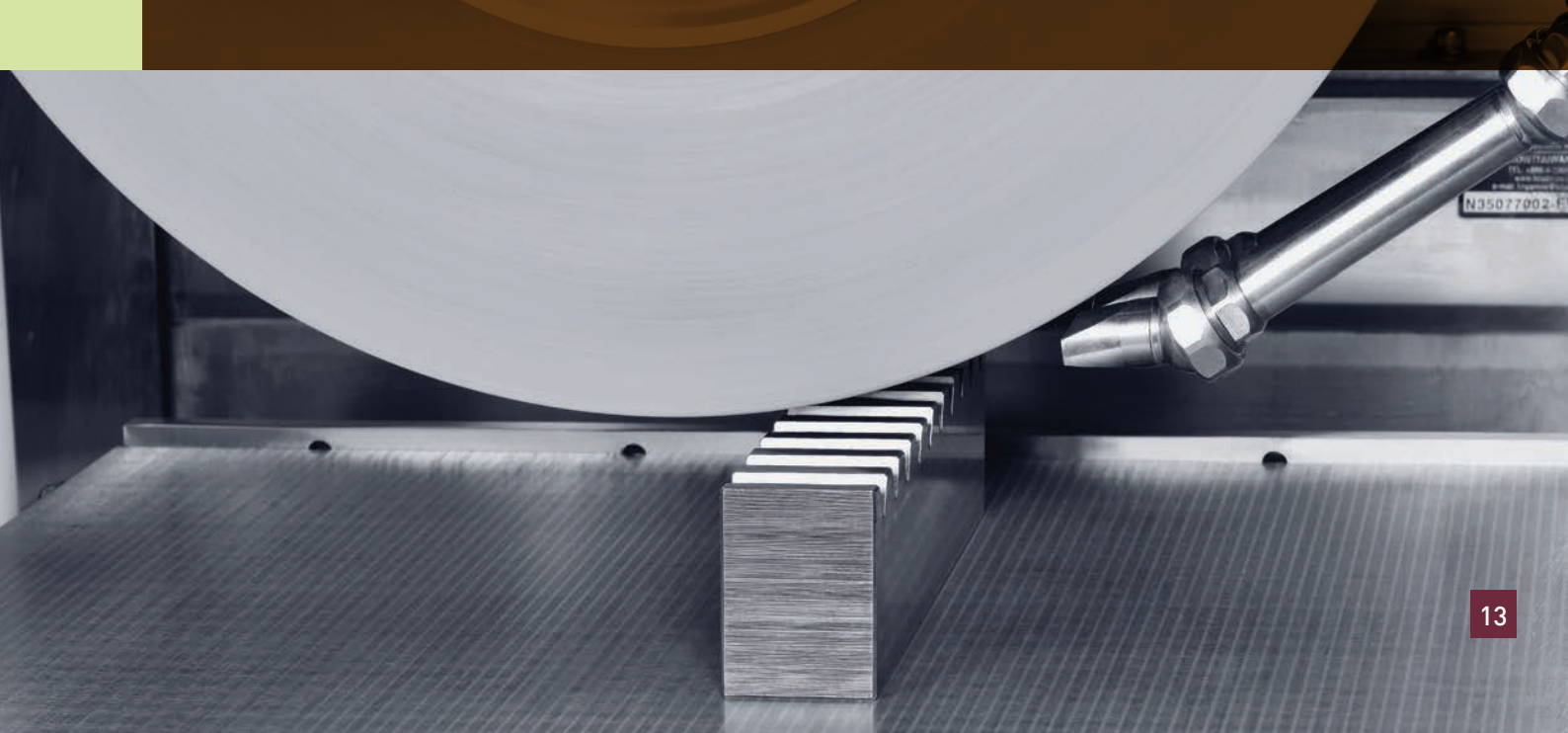
Units: mm (")



Note: Machine shown with optional accessories.



FMG Series with traveling column allows operators to easily grind complex workpieces





When it comes to affordable traveling column grinders, Chevalier's FMG Series machine is your only choice

Accessories

Standard accessories

- 15" touch screen with HMI
- Wheel flange (clamping width): 19~100 mm (0.7"~3.9")
- Grinding wheel (OD x Width x Bore): $\text{\O}405 \times 50 \times \text{\O}127 \text{ mm}$ ($\text{\O}16" \times 2" \times \text{\O}5"$)
- Splash guard
- Fully enclosed splash guard
- Heat exchanger for electric cabinet
- Leveling screws, nuts and pads: 10 sets
- Toolbox (includes balancing arbor, hex head wrench, open-end wrench)
- Wheel mounting/dismounting tools
- Diamond dresser stand with diamond rod

Optional accessories

- Dressing attachment- Over-the-wheel type
- Dressing attachment- table mounted type
- Automatic grinding wheel dynamic balancing system
- Cooling system for spindle
- Servo-driven coolant spray nozzle (Y-axis)
- Auto inline measuring system
- Spindle motor 40 HP
- Coolant system with auto paper feeding device and magnetic separator
- Electromagnetic chuck
- 4th-axis, rotary table
- Three-point diamond dresser
- Y-, Z-axis linear scale

Specifications

Item	Description	FMG-B1224	FMG-B1640
Control system		SMART iControl	
Capacity	Max. grinding length-longitudinal	610 mm (24.0")	1,010 mm (39.8")
	Max. grinding width-crosswise	305 mm (12.0")	405 mm (15.9")
	Distance between table to spindle centerline	590 mm (23.2")	
	Height from table to ground	810 mm (31.9")	
	Max. table load	420 kg (925 lbs.)	670 kg (1,476 lbs.)
Table	Table size	300 x 600 mm (11.8" x 23.6")	400 x 1,000 mm (15.7" x 39.4")
	T-slots (width x pitch x no.)	14 mm x 100 mm x 3 (0.6" x 3.9" x 3)	
	Table speed	0~25 m/min (0~82 fpm)	
	Max. table travel	710 mm (28.0")	1,100 mm (43.3")
Transverse movement (Z)	Max. travel	350 mm (13.8")	450 mm (17.7")
	Feed speed	0~4,000 mm/min (0~13 fpm)	
	Min. input	0.001 mm (0.0001")	
Wheelhead elevation (Y)	Max. travel	450 mm (17.7")	
	Feed speed	0~3,800 mm/min (0~12.5 fpm)	
	Min. input	0.001 mm (0.0001")	
Spindle	Spindle speed	600~3,600 rpm	
Motors	Spindle motor	11 kW (15 HP)	
	Axis motors (X/Y/Z)	X: AC servo 3.9 kW Y: AC servo 2.4 kW Z: AC servo 3.9 kW	X: AC servo 5.9 kW Y: AC servo 2.4 kW Z: AC servo 3.9 kW
Wheel dimension	OD x Width x Bore	Ø405 x 50 x Ø127 mm (Ø16" x 2" x Ø5")	
Power and air requirement	Power required	33 kVA	36 kVA
	Total air consumption	Pressure	6 kg/cm ² (86 psi)
		Flow	200 NL/min (7 cfm)
Machine dimensions	Floor space (W x D x H)	3,103 x 3,933 x 2,480 mm (122.2" x 154.8" x 97.6")	3,675 x 4,055 x 2,480 mm (144.7" x 159.6" x 97.6")
	Net weight	5,800 kg (12,800 lbs.)	6,500 kg (14,300 lbs.)
Accuracy	Positioning accuracy	0.005 mm (0.00019")	
	Repeatability accuracy	0.003 mm (0.00011")	
	Accuracy standard	ISO 1986-1	

All content is for reference only and may be subject to change without prior notice or obligation.

Vertrauen Sie auf bald 80 Jahre Erfahrung!

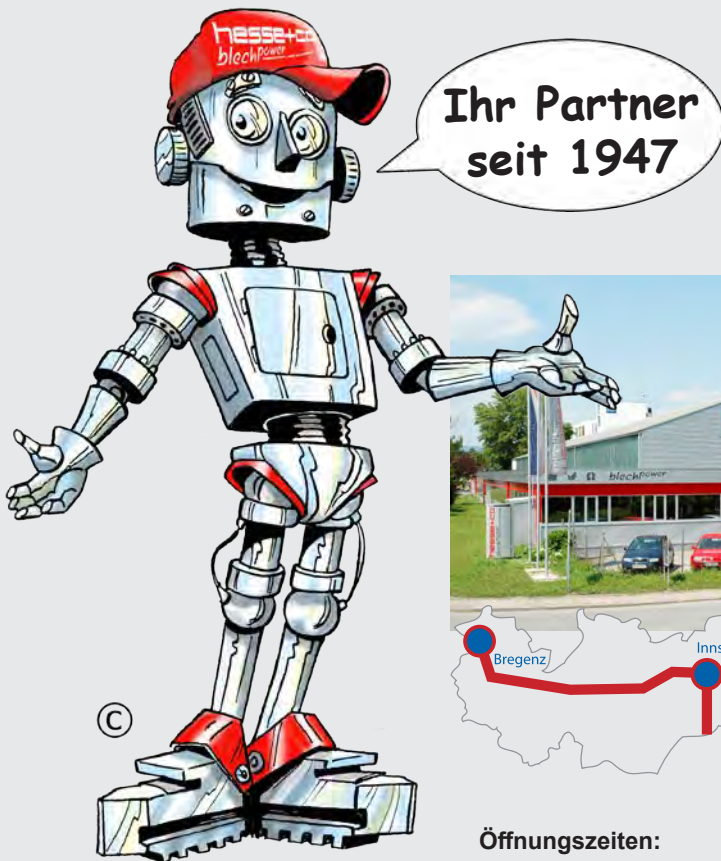
Die Firma **Hesse + Co** wurde 1947 als Hersteller von Blechbearbeitungsmaschinen gegründet. Seit 1980 sind wir auf den Handel mit neuen sowie gebrauchten Blechbearbeitungs- und Werkzeugmaschinen spezialisiert.

Wir haben ständig etwa 300 Maschinen in unserer 2.000 m² großen Ausstellungshalle, die nur 20 Minuten vom internationalen Flughafen Wien entfernt ist.

Trust in nearly 80 years of experience!

Hesse + Co was established in 1947 as a manufacturer of sheet metal working machines. Since 1980 we are specialized in dealing with new and second hand sheet metal processing machines and machine tools. We always have approximately 300 machines available in our 2.000 m² showroom, which is located only 20 minutes from the Vienna International Airport, waiting for your inspection.

www.hesse-maschinen.com



Öffnungszeiten:

Mo - Do 7:45 - 16:30 Uhr
Fr 7:45 - 13:15 Uhr

Hesse + Co Maschinenfabrik GmbH
Industrienzentrum NÖ-Süd
Straße 4 - Objekt 8
A-2351 Wiener Neudorf
AUSTRIA

hesse **hesse+co**
blechpower
maschinen und werkzeuge

Tel.: +43/2236/638 70-0
office@hesse-maschinen.com
www.hesse-maschinen.com

Technische Änderungen, Irrtum und Druckfehler vorbehalten.
Gültig bis auf Widerruf.