

FIBER LASER

Technologies

HD-F / HD-FL

HD-FF

HD-F COMBI

HD-F BH

HD-FA

HD-FO



- Easy to Use
- High Quality Cutting
- Low Energy Consumption
- Faster
- Efficient
- Winning
- Ergonomic



DURMA





As a total supplier for sheet metal manufacturing with almost 60 years of experience, Durma understands and recognizes the challenges, requirements and expectations of the industry. We strive to satisfy the ever higher demands of our customers by continuously improving our products and processes while researching and implementing the latest technologies.

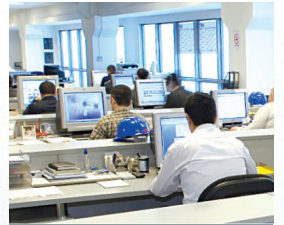
In our three production plants with a total of 150.000 m², we dedicate 1,000 employees to delivering high quality manufacturing solutions at the best performance-to-price ratio in the market.

From the innovations developed at our Research & Development Center to the technical support given by our worldwide distributors, we all have one common mission: to be your preferred partner.

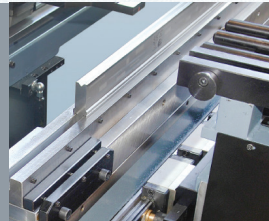
Present Durmazlar machines with **DURMA** name to the world.



1
High technology,
modern production
lines



2
Top quality
components



3
High quality
machines designed
in R&D Centre

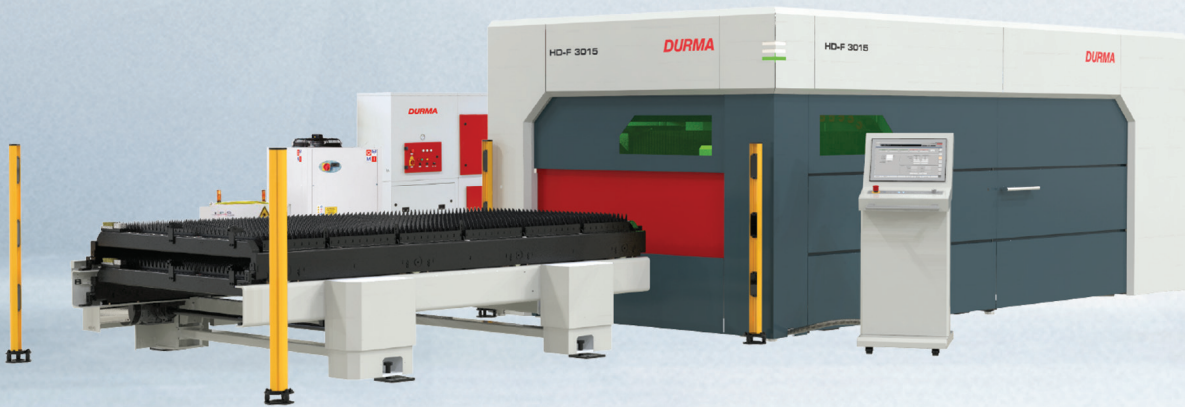
The Winning Force

Low operating cost and energy consumption

Globally recognized high performance components

Precise cuts and high durability

High profit margin



Fiber Lasers provide innovative solutions

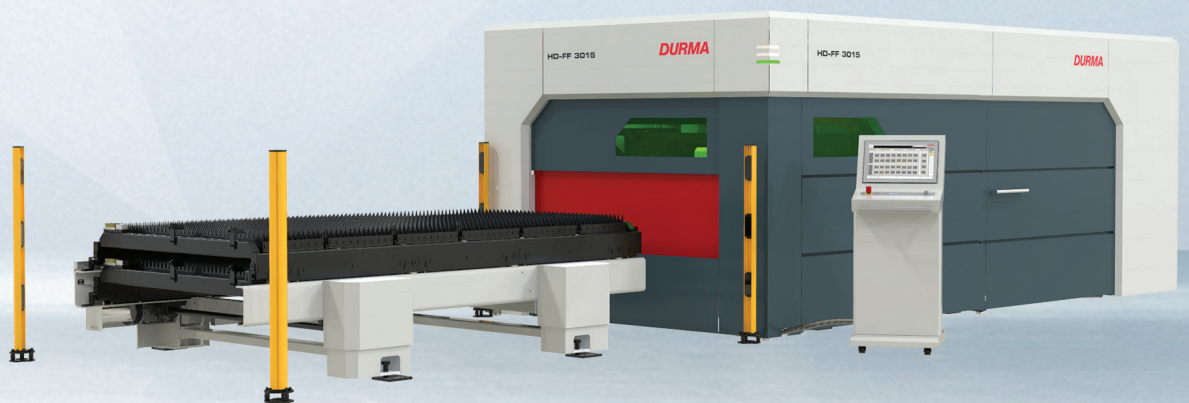
Perfect results on variety of material

Efficient and precise cuts on thick and thin material

Low investment and operating costs

Modern and compact design

Fast service with remote control



Fiber Laser Technologies

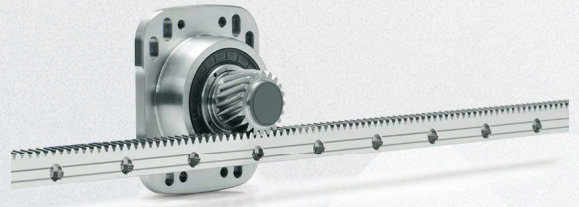
Fiber lasers outshine with its fast cutting and energy efficiency abilities when especially its compared to CO₂ lasers. Easy use, maintenance and service has been achieved by the high technology of Fiber Lasers. Globally recognized efficient components used in **DURMA** Fiber Lasers add value to your company.

Rack & Pinion and Linear Motor Motion technologies allows us achieve 3G acceleration. We always strive to serve quality, performance and efficiency to our clients.

DURMA Fiber Laser is unrivaled with its rigid body structure, perfect filtration system, compact design, efficiency and user friendliness.

Rack and Pinion Motion System (HD-F Series)

Axes motion is achieved by rack and pinion design. There are not any intermediate load transmitting elements between the motor and the pinion which otherwise could cause precision losses. High precision two-day, hardened helical racks with low clearance make it possible to achieve very high acceleration (synchronized 28 m/s²), speed (synchronized 170 m/min.) and accuracy (0,05 mm) values.



Linear Motor Motion System (HD-FL Series)

Moving axes are driven by high velocity and acceleration linear motors which are the latest development in linear technology. These motors make it possible to achieve very high acceleration (synchronized 35 m/s²), speed (synchronized 280 m/min.) and accuracy (0,03 mm) values.



Fiber Laser Power Source

| Resonator | 2.0 kW | 4.0 kW | 6.0 kW | 8.0 kW | 10.0 kW | 15.0 kW | 20 kW |
|---------------------------|--|------------|------------|------------|--------------|--------------|--------------|
| Product designation | YLS-2000 | YLS-4000 | YLS-6000 | YLS-8000 | YLS-10000 | YLS-15000 | YLS-20000 |
| Available operation modes | CW, QCW, SM | | | | | | |
| Polarization | Random | | | | | | |
| Available output power | 200-2000 w | 400-4000 w | 600-6000 w | 800-8000 w | 1000-10000 w | 1500-15000 w | 2000-20000 w |
| Emission wavelength | 1070 -1080nm | | | | | | |
| Feed fiber diameter | Available in single mode, 50, 100, 200, 300µm | | | | | | |
| Ancillary Options | Options Available: Internal coupler, Internal 1x2 beam switch, Internal 50:50 beam splitter, External 1x4 or 1x6 beam switch | | | | | | |
| Interface | Standard: LaserNet, Digital I/O, Analog Control Additional Options: DeviceNet or Profibus | | | | | | |

| Material (Cutting Capacity) | YLS 2000 (2kW) | YLS 4000 (4kW) | YLS 6000 (6kW) | YLS 8000 (8kW) | YLS 10000 (10kW) | YLS 15000 (15kW) | YLS 20000 (20kW) |
|-----------------------------|----------------|----------------|----------------|----------------|------------------|------------------|------------------|
| Mildsteel (s235jr) | 12 (16) mm | 20 (22) mm | 25 mm | 25 (30) mm | 30 mm | 35 (40) mm | 40 (50) mm |
| Stainless Steel (1.4301) | 6 (8) mm | 10 (12) mm | 15 (20) mm | 20 (25) mm | 25 (30) mm | 35 (40) mm | 40 (50) mm |
| Aluminum (AlMg3) | 6 (8) mm | 12 (15) mm | 20 (25) mm | 25 (30) mm | 25 (30) mm | 35 (40) mm | 40 (50) mm |
| Copper | 3 mm | 6 mm | 10 mm | 12 mm | 15 mm | 15 mm | 15 mm |
| Brass | 6 mm | 10 mm | 12 mm | 15 mm | 20 mm | 20 mm | 20 mm |

*Standard cutting parameters.

Factors such as rust, shell formation, paint, label, pitch shifts on the surface, rolling defects, rusts on the surface of the material, affect the black sheet cutting negatively. The top and bottom surfaces of the material to be cut must be clean. The cutting quality and cutting speeds of sandblasted sheets vary.

Low Operating Costs

- Low energy consumption
- Low cost per component
- Optimised focal distance for all thickness values
- Maintenance free operation
- Compact design, fast installation
- Rigid body structure, high durability

Laser Cutting Head

The ProCutter offers a complete solution for the laser-based fusion cutting of thin and medium material thickness in the wavelength range around 1µm. In flame cutting, greater material thicknesses can also be processed while maintaining high standards of quality. The potential of the cutting head is optimally converted into productivity, especially in the case of flatbed and pipe cutting machines, where innovative technologies are combined with proven concepts, providing the best possible performance, range of flexibility and degree of reliability.

The combination of proven technology and optimized design enables processing with up to 40 kW laser power in the near-infrared range - and gives you reduced installation space and weight at the same time. A robust and dustproof housing ensures a long service life and allows external linear drive accelerations up to 4.5 g enabling an efficient cutting operation. High-quality optics and the highest standards of quality in manufacturing and assembly ensure optimum laser beam guidance and shaping with high focal position stability, even at high laser power.

Efficient

- Lightweight and slim design created for fast acceleration and cutting speed
- Motorized focus position adjustment for automatic machine setup and piercing work
- Drift-free, fast-reacting distance measurement
- Permanent protective window monitoring
- Values displayed via bluetooth

Flexible

- Selectable optical configuration, optimized for the range of applications
- Straight and angled design versions adapted to the machine concept
- Zoom lens for automatically adjusting the focus diameter
- Motorized or manual focal position adjustment

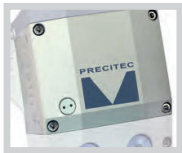
User Friendly & Safe

- Completely dustproof beam path with protective windows
- LED operating status display
- Display of operating parameters via Bluetooth® and interface for machine control
- Pressure monitoring in the nozzle area (gas cutting) and in the head
- Monitoring of the piercing process and detection of cutting breaks with CutMonitor



App for iOS and Android gadgets

Dynamic laser cutting machines require smart cutting heads for its operations. ProCutter offers a fully-integrated sensor system that monitors the cutting process and provides the relevant information to the user. The ProCutter ensures that each component can be re-manufactured at a high standard of quality.



Focal Length Adjustment:
Manual or motorized via machine control

External Interface:
Output of all sensor data as an analog value, readout the values via Bluetooth®, set of thresholds

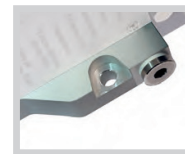


Focusing Lens:
High-quality optics | X/Y adjustment | no repositioning | additional protective glass below focusing lens

Protective Glass of Collimation Unit



Protective Glass Cartridge:
Protecting the optics against dirt and fume | monitoring of vattendance and contamination | tool free, easy change



Mounting of the head:
Easy accessibility from the front



LED Bar:
For immediate display of the current system state (pressure, temprature, drive, contamination)



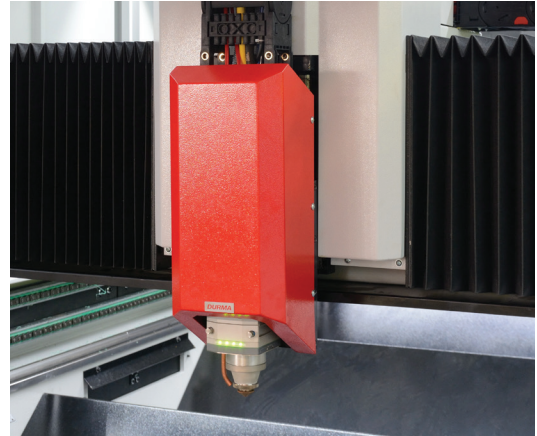
Distance Measurement:
Fas, exact, drift-free distance measurement ay any operating temperatures, even at high accelarations



Higher Acceleration on Z-Axis

Lighter and strongly rigid bridge does not allow it to vibrate at high speed and obtain high accurate cutting geometry.

Equipped with world's favorite head "Precitec". During the construction of the bridge all kind of deformations analyzed and prevented.

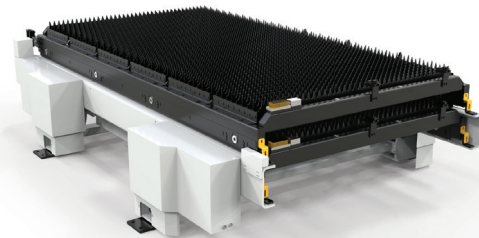


Shuttle Table

Servo controlled shuttle table system applied to HD-F 3015 (Standard) and HD-F 4020 (Option) series machines reduces the changeover times by 40%. For 3015 series it drops down to 19 sec. and for 4020 series, to 29 sec.

The shuttle table is fully automatic and maintenance-free on all machines. Hydraulic oil is not used and changing the table is fast, soft and has low energy cost.

Table change time is 40 seconds in HD-F 4020 series. and 45 seconds in the HD-F 6020 series. Back and forth movement of all tables are performed with servo motors.



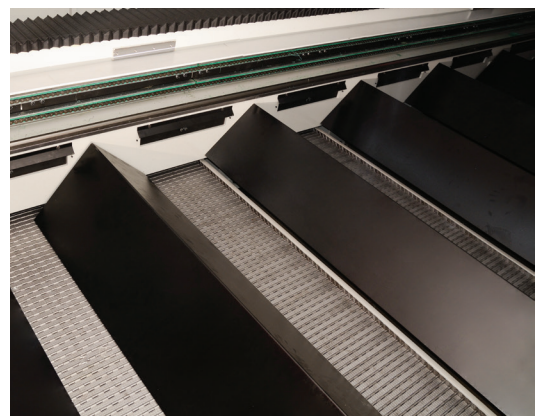
With Servo Motor : Standard HD-F 3015, Option HD-F 4020



With Asynchronous Motor : Standard HD-F 4020 - 6020

Multi Chambers High Efficient Suction System

With the multi chambers high efficient system offers the ability to make an equal amount of suction during the cutting operation of the whole machine cutting area.



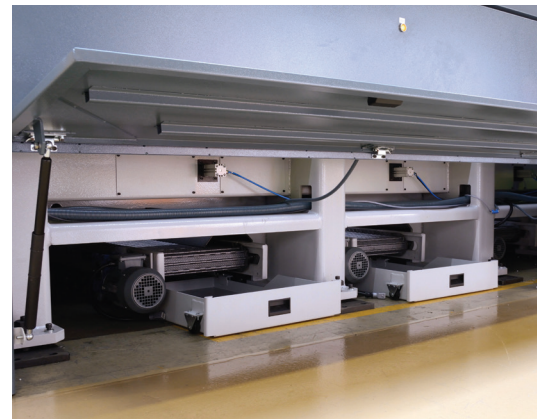
Easy Access Side Door

There is standart side door to access the back part of the cutting sheet and correct the cutting parts positions during the operation. This side door also used by the service team of the laser machine when the maintenance will be done.



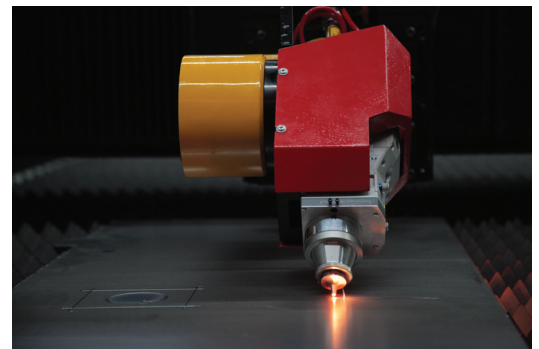
Scrap Conveyor

The optional lateral automatic scrap conveyors allow the removal of scrap pieces from the working area without the need to interrupt the cutting process. The sideways operation of the short conveyors allow for easy maintenance and trouble-free running.



Bevel Head $\pm 45^\circ$

Bevel Head for vertical and bevel cuts from 0° to 45° . Optimal results provided through the combination of 5 axis interpolation and software. Positive and negative bevel angles in one part.



Control Panel

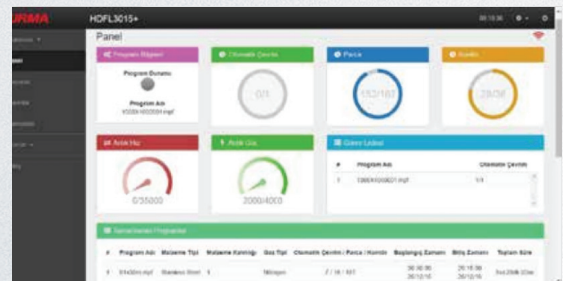
The controller has a Durma operator interface and a complete cutting database for all standard cutting applications. The database includes the cutting parameters for standard materials (steel, stainless steel, aluminum) for common thickness ranges. Based on these reference values the operator can easily improve the cutting quality for different types of materials.

- Sinumerik 840 D SL
- IFP1900 19" Touch Screen
- IPC427 E Intel I5-6442EQ
- 8GB SD Ram DDR3WIN10/SSD 240 GB
- Ethernetx3
- USBx4
- PCI x1
- CF Card
- DPP



Durma Cloud

Actual state of machine can be traced,
 Operator can leave machine when program is too long
 Cutted parts can be reported,
 Retrospective or periodic reports can be created,
 Cost calculations can be done,
 Consumption calculations can be done,
 Running duration, standby duration, productivity calculations can be done,
 Error messages and error reasons can be inspected



CAD/CAM Software

Lantek - Metalix

- Advanced optimisation: tools optimisation
- Fast tool way collision protection. Toolway optimisation to prevent damage from possible deformed material
- Writings supported by your operating system can be applied directly on the material to be cut
- Cutting direction, clockwise or opposite is supported
- Advanced corner applications provide perfect corners and soft cutting.
- Fillets, cooling, slowing down, circulation
- Shared Cuttings: This function is especially useful for thick plates and reduces the need of marking holes during cutting
- Automatic entry point
- Fully automatic cutting
- Z-Axis control



Lantek



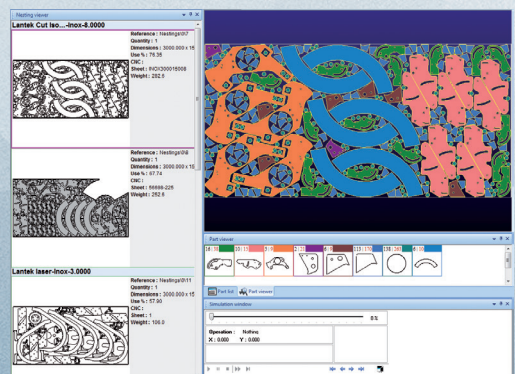
Metalix



Lantek inside



Metalix
MT software



Experience The Difference of DURMA HD-FL

Chiller

DURMA Laser power source and cutting head is chilled with specially designed, low energy consuming, high efficient chiller unit.

Filter

Used to eliminate dust, particles and harmful fumes, generated during cutting. It is fully automatic dust collecting shake filter.



HD-F / HD-FL

FIBER LASER

| | 3015 | 4020 | 6020 | 8020 | 12020 | |
|---------------------|------------------|-----------|---------------------|-----------|------------------|-------------------|
| X Axis | 3060 | 4100 | 6150 | 8200 | 12200 | mm |
| Y Axis | 1530 | 2100 | 2100 | 2100 | 2100 | mm |
| Z Axis | 160 | 185 | 185 | 185 | 185 | mm |
| Max. Sheet Size | 3048 x 1524 | 4064x2032 | 6096x2032 | 8128x2032 | 12192x2032 | mm |
| Max. Sheet Weight | 315 | 315 | 315 | 315 | 315 | Kg/m ² |
| | Rack&Pinion HD-F | | Linear System HD-FL | | | |
| X Axis | 120 | | 160 | | m/min. | |
| Y Axis | 120 | | 160 | | m/min. | |
| Synchronous | 170 | | 226 | | m/min. | |
| Acceleration | 28 | | 35 | | m/s ² | |
| Positional Accuracy | ±0,05 | | ±0,03 | | mm | |
| Repeatability | ±0,05 | | ±0,03 | | mm | |



User
Friendly

Ergonomic

Efficient

Fast

Reliable
Brand



HD-FF

FIBER LASER

| | HD-FF 3015 | |
|-----------------------|---------------|-------------------|
| X Axis | 3100 | mm |
| Y Axis | 1530 | mm |
| Z Axis | 140 | mm |
| Max. Sheet Size | 3048x1524 | mm |
| Max. Sheet Weight | 315 | Kg/m ² |
| | Rack & Pinion | |
| X Axis Speed | 90 | m/min. |
| Y Axis Speed | 90 | m/min. |
| Speed (Synch.) | 127 | m/min. |
| Acceleration (Synch.) | 14 | m/s ² |
| Positioning Tolerance | ±0,05 | mm |
| Repeatability | ±0,05 | mm |
| Table Change Time | 19 | sec |

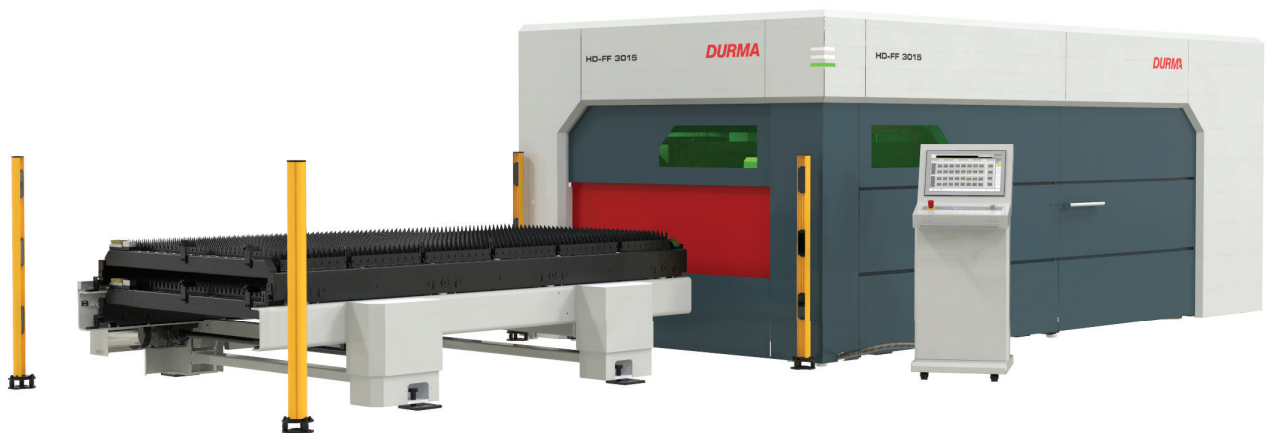
| Material Cutting Thickness (mm)* | | | | |
|----------------------------------|---------|---------|---------|---------|
| Material | 2 kW | 3 kW | 4 kW | 6 kW |
| Mild Steel (s235jr) | 12 (16) | 16 (20) | 20 (22) | 25 |
| Stainless Steel (1.4301) | 6 (8) | 8 (10) | 10 (12) | 15 (20) |
| Aluminium (AlMg3) | 6 (8) | 8 (10) | 12 (15) | 20 (25) |
| Copper | 3 | 5 | 6 | 10 |
| Brass | 6 | 8 | 10 | 12 |

*Values in parentheses can be cut with little burr with of these resonators power.

Factors such as rust, shell formation, paint, label, pitch shifts on the surface, rolling defects, rusts on the surface of the material, affect the black sheet cutting negatively. The top and bottom surfaces of the material to be cut must be clean. The cutting quality and cutting speeds of sandblasted sheets vary.

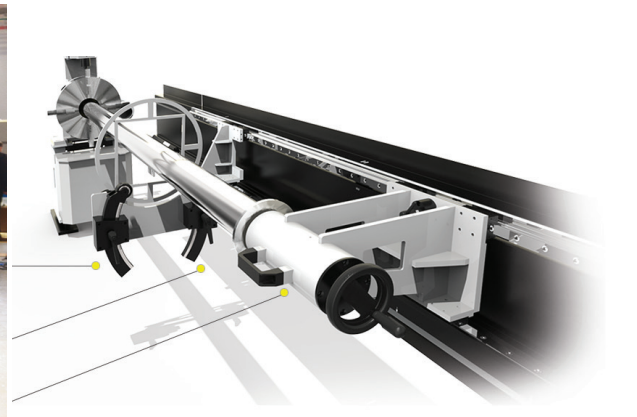
Why HD-FF Fiber Laser?

- Best price and performance
- Cutting power up to 6 kW
- Fast & reliable
- High sensitivity
- Easy to use
- High quality
- Low operating cost



HD-F / HD-FL BH

2D Pipe and Profile Cutting



Mechanical tightening and loosening the chuck is done with the apparatus fixed on the mirror.



Tube – Profile Cutting Technical Features

| | | |
|------------------------------|-----------|---|
| Cutting length | mm | 3.000 mm (Chuck 6.000 mm through, $\leq \varnothing 130 \text{ mm}$) |
| Maximum tube loading | Kg | 120 |
| Laser power supply | | 2-10 kW |
| Working diameter | min./max. | $\varnothing 30 / \varnothing 400$ |
| Max. tube thickness | mm | Up to 12 mm depending on material and laser power |
| Square profile cutting | max. | 250 x 250 mm |
| Max. positioning speed X / Y | m/min. | 100 |
| Cutting accuracy | mm | +/- 0,5 / 1000 |
| Materials | | Mildsteel / Stainless / Aluminum / Copper / Brass |

HD-F COMBI

2D Cutting & Pipe and Profile Cutting



Pipe - Profile Cutting Technical Data (HD-F 3015 & HD-F 4020 & HD-F 6020)

| | | |
|---|--------------|------|
| Max. Pipe Diameter | 170 | mm |
| Max. Square Profile Dimension | 120x120 | mm |
| Max. Rectangle Profile Dimension | 150x100 | mm |
| Min. Pipe Diameter | 20 (12 Ops.) | mm |
| Max. Material Length | 6500 | mm |
| Max. Material Length for Auto Unloading* | 4500 | mm |
| Max. Material Length for Manual Unloading** | 6000 | mm |
| Max. Material Weight | 37,5 | kg/m |
| Max. Total Material Weight | 210 | kg |
| Cutting Tolerance*** | ±0.2 | mm |

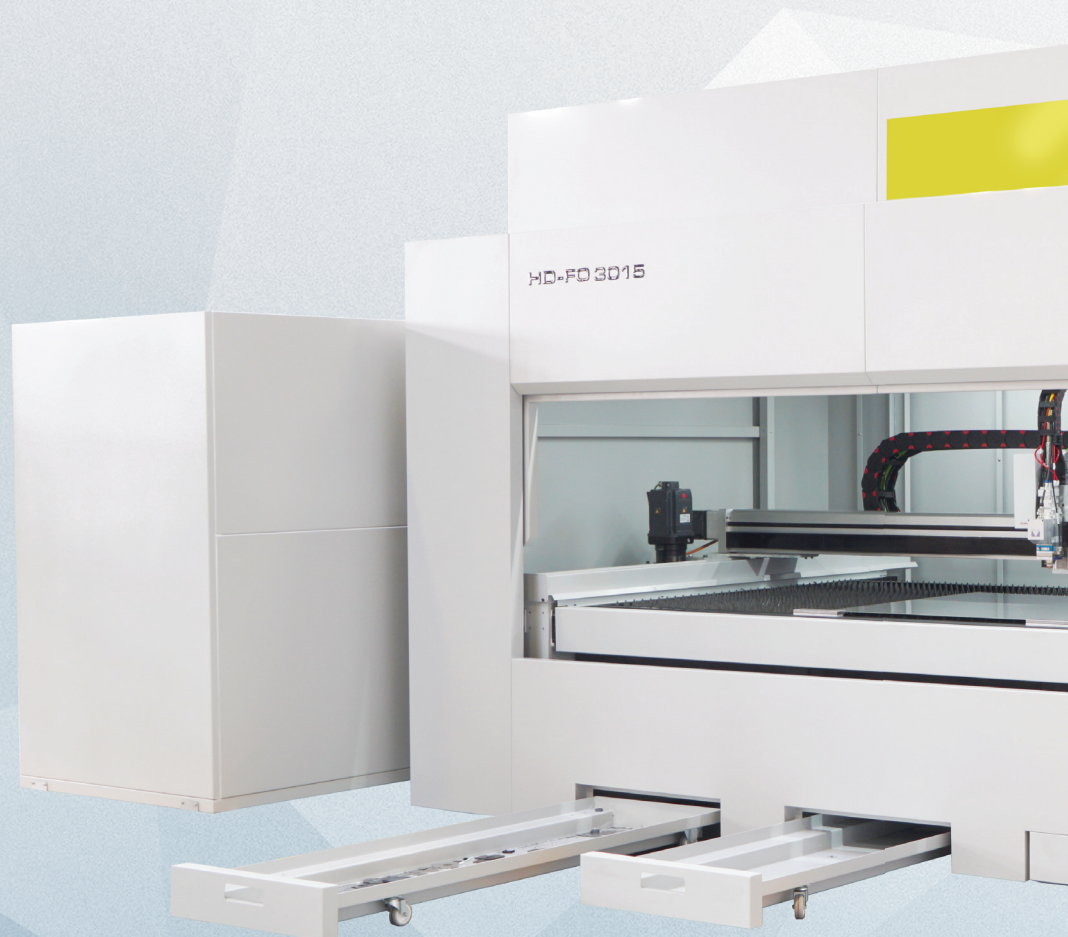
* 6500 mm for HD-F 6020

** 6500 mm for HD-F 6020

*** The maximum cutting precision on the part depends on the type of profile and the production method.

HD-FO

FIBER LASER



User
Friendly

Ergonomic

Efficient

Fast

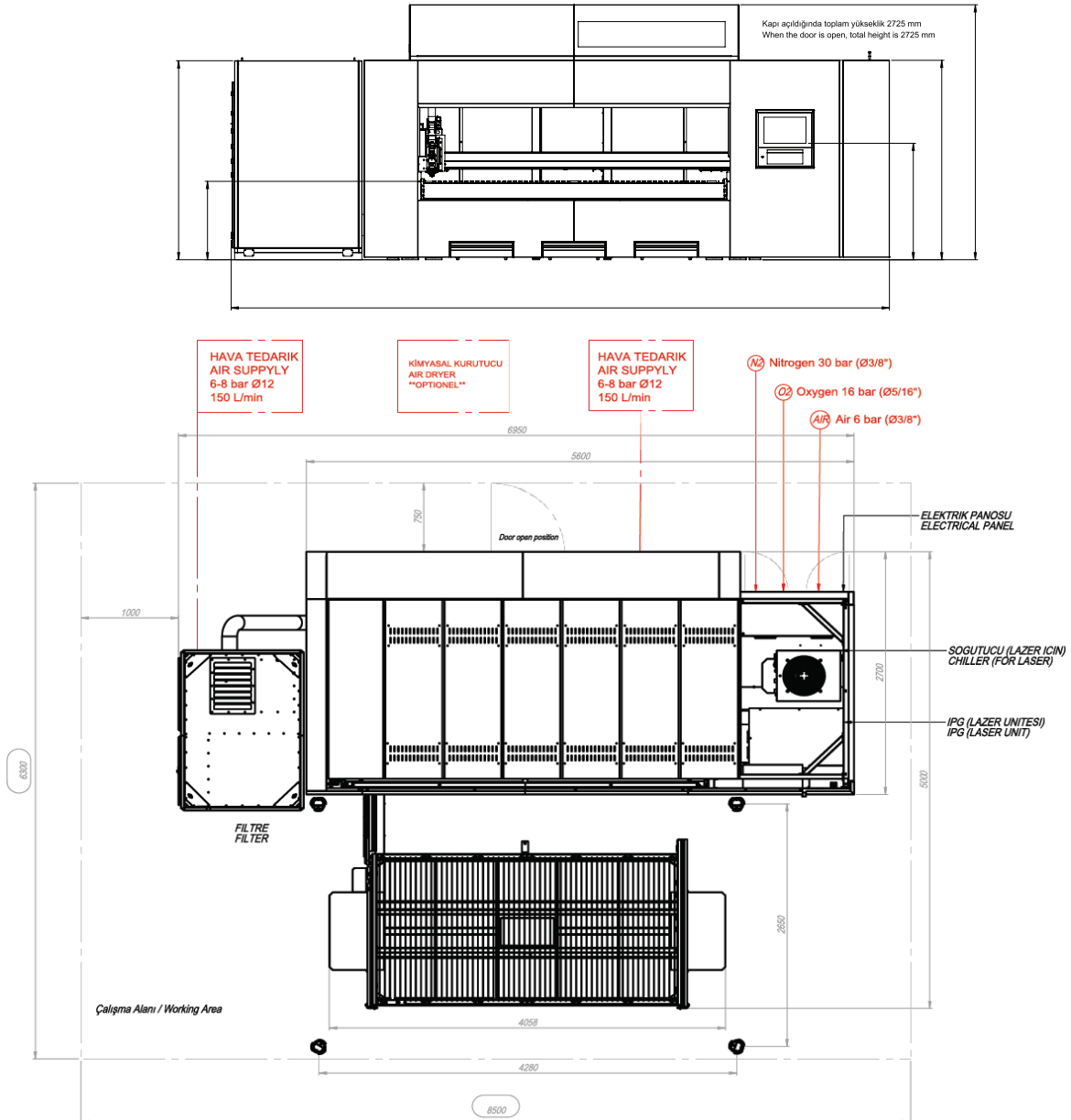
Reliable
Brand



SPECIFICALLY DESIGNED ACCORDING TO LAYOUT

HDFO fiber lasers, stand out with their speed, high quality materials, efficiency and industrial design. The loading and unloading of the material to be cut requires less effort when the shuttle table is not required.

- User Friendly
- Low Running Costs
- Quick Opening Front Door
- Easy Access To Cutting Area Compact
- Bridge Design
- Fast Packing & Delivery



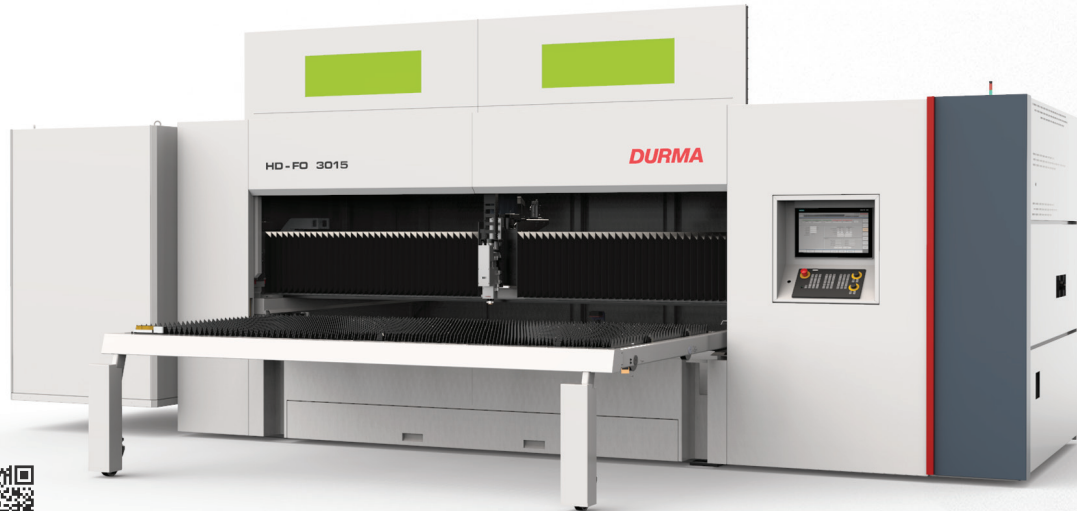
HD-FO

FIBER LASER

| HD-FO Technical Data | | | | |
|--|------------------------------|----------------|----------------|------------------|
| Cutting axes | | | | |
| X Axes | 3048 | | | mm |
| Y Axes | 1530 | | | mm |
| Z Axes | 125 | | | mm |
| Max. Sheet Dimensions | 3.048 x 1.524 | | | mm |
| Max. Sheet Weight | 575 | | | kg |
| Dynamics | | | | |
| Max. Speed X Axis | 90 | | | m/min. |
| Max. Speed Y Axis | 90 | | | m/min. |
| Max. Speed Z Axis | 30 | | | m/min. |
| Max. Synchronized Hz (X-Y) | 127 | | | m/min. |
| Max. Synchronized Acceleration | 14 | | | m/s ² |
| Positioning Tolerance | ± 0,05 | | | mm |
| Repeatability | ± 0,05 | | | mm |
| Control Unit | | | | |
| CNC | BOSCH REXROTH | | | |
| Screen | 19" Touch Screen | | | |
| Laser Cutting Head | | | | |
| Type | Precitec Lightcutter / DURMA | | | |
| Focal Distance (mm) | 150 | | | |
| Focal Type | Auto | | | |
| Material Cutting Thickness (mm) | | | | |
| Material | YLR 1000 (1kW) | YLS 2000 (2kW) | YLR 3000 (3kW) | YLS 4000 (4kW) |
| Mild Steel (s235jr) | 8 | 12 | 16 | 20 |
| Stainless Steel (1.4301) | 4 | 6 | 8 | 10 |
| Aluminium (AlMg3) | 4 | 6 | 8 | 12 |
| Copper | 2 | 3 | 5 | 6 |
| Brass | 4 | 6 | 8 | 10 |

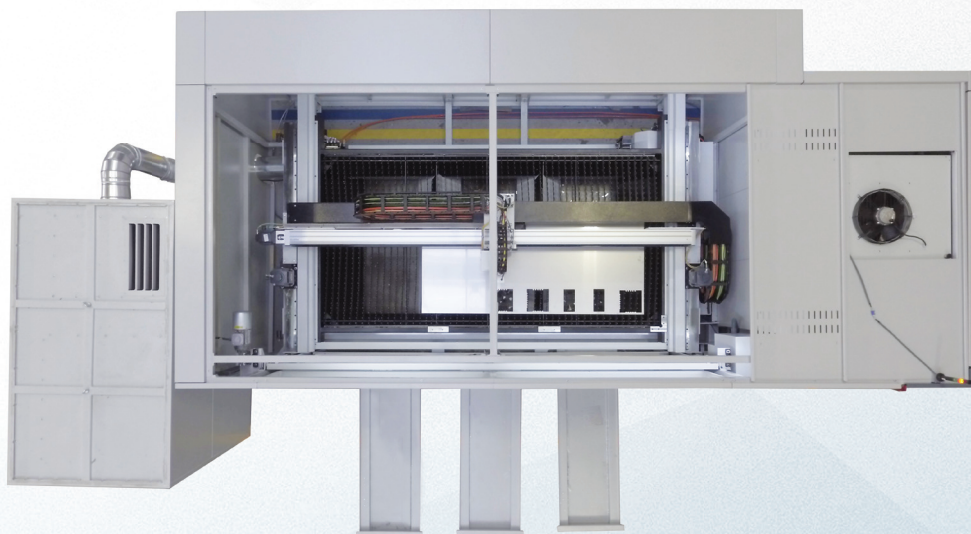
MANUAL CUTTING TABLE

The machine is designed especially for the customers who has layout problems. Sheet loading and unloading is extremely easy in cases where no shuttle table is needed.



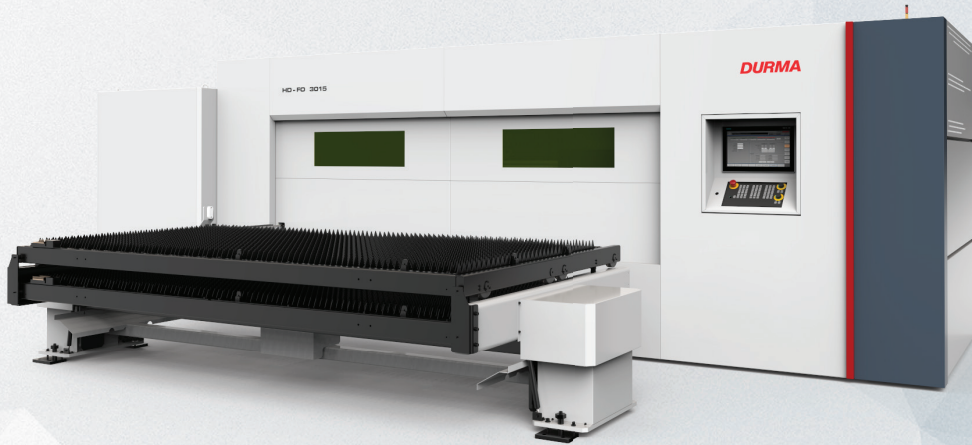
COMPACT, MODERN AND ERGONOMIC LAY-OUT

Helping of the compact layout of the machine, sheet loading, cutting and unloading operations are performed by using less space and less operations



PNEUMATIC SHUTTLE TABLE (OPTION)

As standard there is a manual cutting table. Optionally, with your 1 or 2 KW power source order, you can get a pneumatic shuttle table.



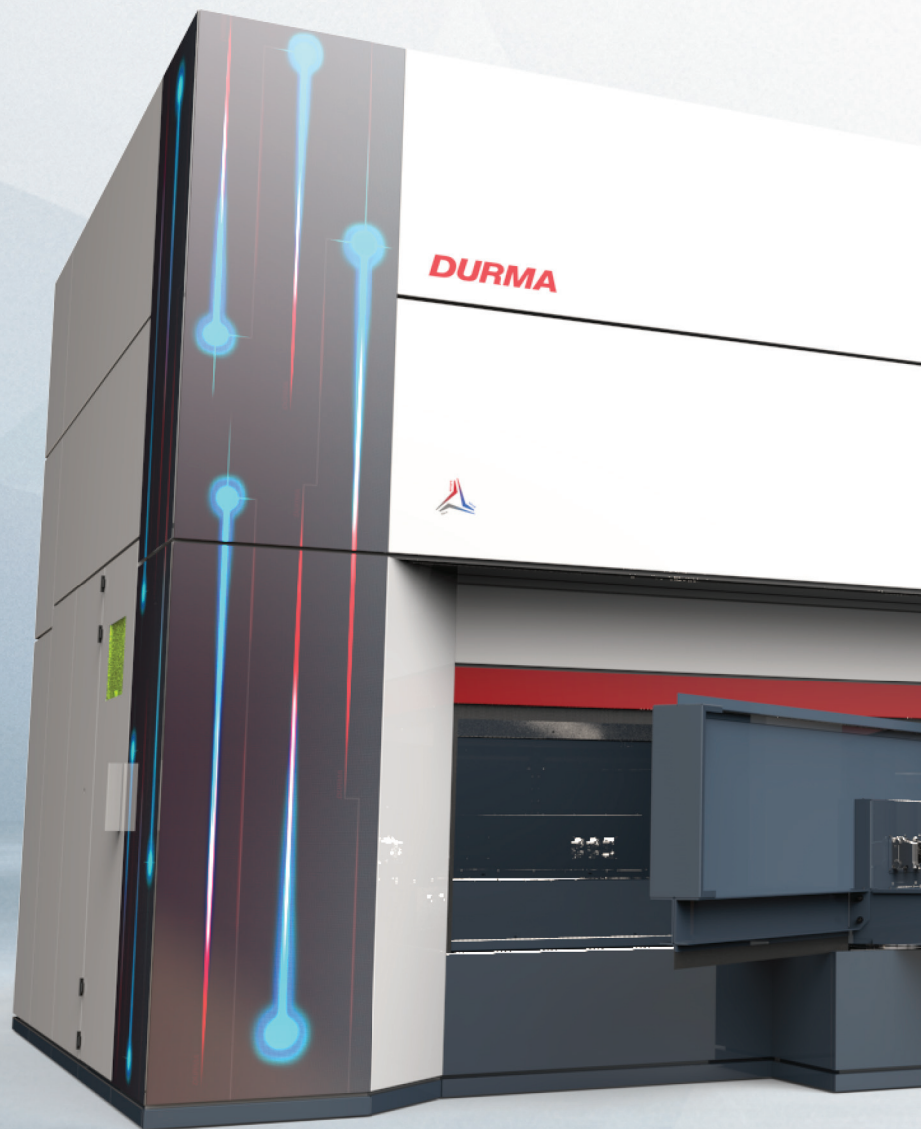
EASY ACCES TO CUTTING AREA WITH BACK DOOR

Rear door for use when cutting is required.
This rear door is also used during machine maintenance



HD-FA

5 AXIS LASER



**User
Friendly**

Ergonomic

Efficient

Fast

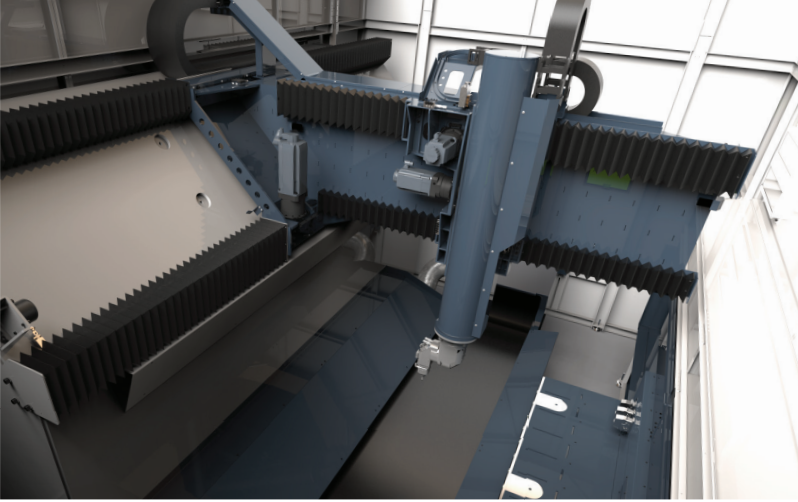
**Reliable
Brand**

HD-FA 3015

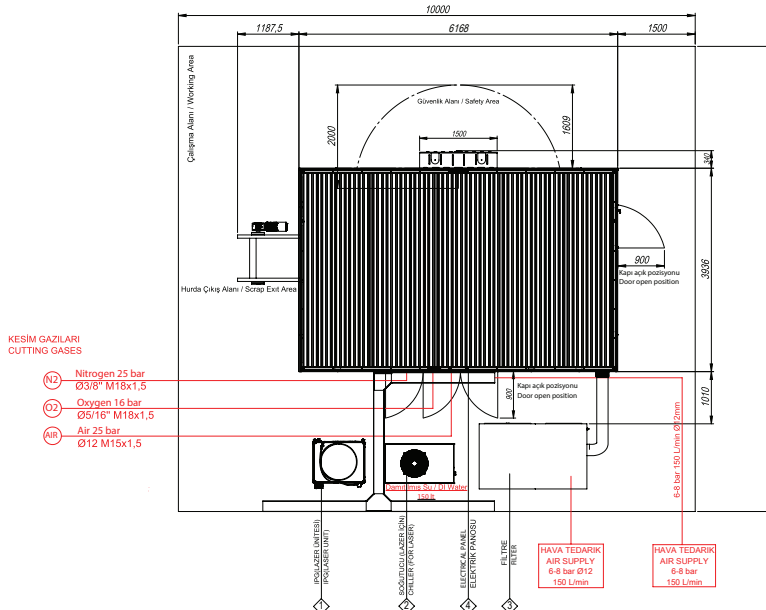
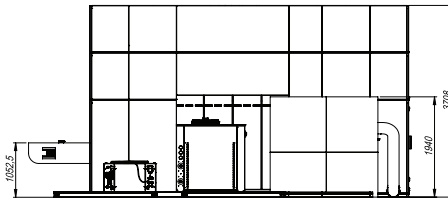


THE 5 AXIS FIBER LASER SYSTEM FOR AUTOMOTIVE AND AEROSPACE INDUSTRY

DURMA 5 axis fiber laser system will be your best partner for automotive and any other high-sense and 3D complex part production. +25% increased processing space due to same concept machines. For gratify cutting performance, strong machine frame and rotary table provide best quality.



- Modern and Compact Design
- Easy to use Fixture
- Globally High Performance Components
- High Quality 3D Cutting
- Low Energy Consumption
- Faster, Reliable, Efficient



HD-FA TECHNICAL SPECIFICATIONS

| | |
|-------------------------------|------------|
| X axis stroke | 3.000 mm |
| Y axis stroke | 1.500 mm |
| Z axis stroke | 650 mm |
| B axis | ±135° |
| C axis | ±360°xn |
| Max. Synchronous Speed | 173 m/min. |
| Max. Synchronous Acceleration | 1,73 G |
| Positional Accuracy | ±0.08 mm |
| Repeatability | ±0.08 mm |

MACHINE SIZES

| | |
|----------------------------|------------------------------------|
| Machine Size | 6168 mm x 3936 mm h= 3700 mm |
| Working Area | 9.000 mm x 10.000 mm (Secure area) |
| Rotary Table's Door Length | 4.000 mm |
| Machine Weight | 16.000 kg |

CUTTING THICKNESS mm

| Power | 2 kW | 3 kW | 4 kW |
|-----------------------|------|------|------|
| Mild Steel (mm) | 12 | 16 | 20 |
| Stainless (mm) | 6 | 8 | 10 |
| Aluminum (AlMg3) (mm) | 6 | 8 | 12 |
| Brass (mm) | 6 | 8 | 10 |
| Copper (mm) | 3 | 5 | 6 |

CUTTING HEAD

| | |
|-------|-----------|
| Type | 3D |
| Focus | Automatic |

CONTROL UNIT

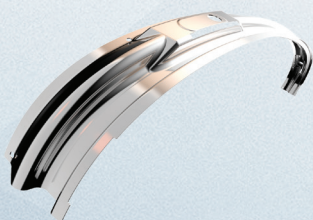
| | |
|--------|---------------------------|
| CNC | SIEMENS SINUMERIK 840D SL |
| Screen | 19" Touch panel |

FILTER

| | |
|----------|--------------------------------|
| Capacity | 2.500 m ³ /h - 4 kW |
|----------|--------------------------------|

CHILLER

| | |
|------------------|------------|
| Chiller for 2 kW | IPG LG 71 |
| Chiller for 3 kW | IPG LG 170 |
| Chiller for 4 kW | IPG LG 171 |



SPECIAL APPLICATIONS

Turkey's Biggest and Fastest Laser



HD-F 20030

Cutting Length 20.000 mm
Cutting Width 3.000 mm
Power 20 kW

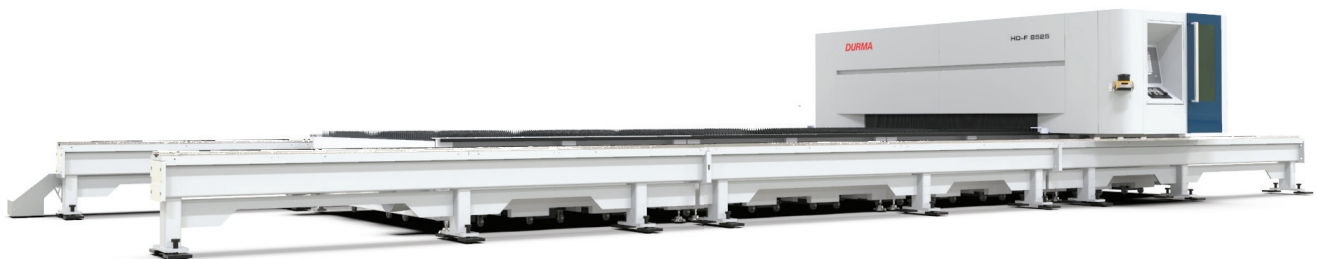
Bevel +/- 45° Cutting Option



HD-F 20030

HD-F 20030 Technical Data

| | |
|------------------------------|---------------------|
| X Axis | 20100 mm |
| Y Axis | 3070 mm |
| Z Axis | 165 mm |
| Max. sheet size | 20090 x 3048 mm |
| X Axis max. speed | 60 m/min. |
| Y Axis max. speed | 60 m/min. |
| Z Axis max. speed | 30 m/min. |
| X-Y Axes synch. speed | 85 m/min. |
| X-Y Axes synch. acceleration | 14 m/s ² |
| Positioning tolerance | 0.05 mm |

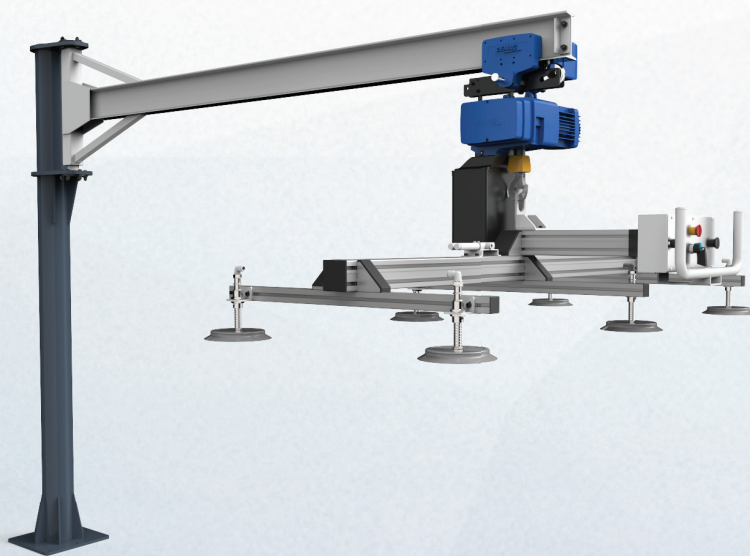


Automatic Loading – Unloading Units Solutions For Your Job

Manual loading-unloading systems

Semi automatic loading-unloading systems

Automatic loading-unloading systems



M-LOADER 3015 / 4020

| Technical Data | 3015 | 4020 |
|-------------------------|-----------------|----------------|
| Sheet Length (Max.) | 500 - 3.000 mm | 500 - 4.000 mm |
| Sheet Width (Max.) | 500 - 1.500 mm | 500 - 2.000 mm |
| Sheet Thickness | 10 mm | 6 mm |
| Max. Loading Capacity | 360 kg. | 450 kg |
| Vacuum Pad Qty. | 6 sec. | 8 sec. |
| Rotation angle (Max.) | 260° | 260° |
| CONSUMPTION VALUES | | |
| Elektricity | 0.5 kW | 0.5 kW |
| Compressed Air | 3 m³/h -- 7 bar | 3m³/h -- 7 bar |

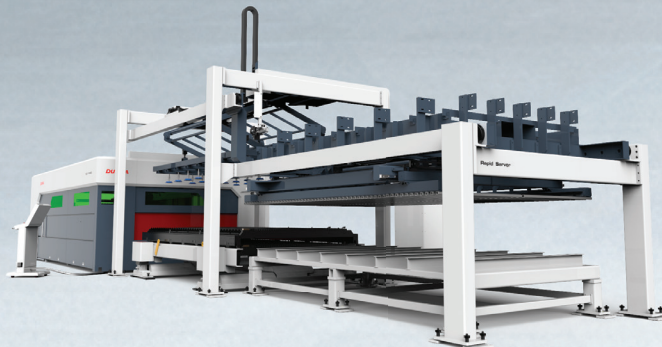
D-LOADER 3015 / 4020

| Technical Data | 3015 | 4020 |
|-------------------------|--|---------------------------------------|
| Sheet Length (Max.) | 500 - 3.000 mm | 500 - 4.000 mm |
| Sheet Width (Max.) | 500 - 1.500 mm | 500 - 2.000 mm |
| Sheet Thickness | 0,5 - 25 mm | 0,5 - 25 mm |
| Max. Loading Capacity | 900 kg. | 1.600 kg |
| Vacuum Pad Qty. | 12 pcs. | 18 pcs. |
| Total Cycle Time | 60-75 sec. (depends on loading height) | 65-85 sec.(depends on loading height) |
| Working Area | 4.200 x 4.100 mm h= 2.260 mm | 5.500 x 5.400 mm h= 2.720 mm |
| Rotation angle (Max.) | 90° | 90° |
| Elektricity | 3 kW | 4 kW |
| Compressed Air | 6 m³/h--7 bar | 10 m³/h--7 bar |



DURMA RAPID SERVER 3015 / 4020 / 6020

| Technical Specifications | 3015 | 4020 | 6020 |
|------------------------------------|--------------------------------------|--|---|
| Sheet Sizes | 800 - 800 mm | 1.000 - 1.000 mm | 1.000 - 1.000 mm |
| Length | 1.000, 1.500, 2.000, 2.500, 3.000 mm | 1.000, 1.500, 2.000, 2.500, 3.000, 3.500, 4.000 mm | 1.000, 1.500, 2.000, 2.500, 3.000, 3.500, 4.000, 6.000 mm |
| Width | 1.000, 1.250, 1.500 mm | 1.000, 1.250, 1.500, 2.000 mm | 1.000, 1.250, 1.500, 2.000 mm |
| Thickness | 0,5 - 25 mm | 0,5 - 25 mm | 0,5 - 25 mm |
| Max. Sheet Size | 3.050 x 1.525 mm | 4.064 x 2.032 mm | 6.096 x 2.032 mm |
| Max. Loadable Sheet Loading Weight | 5.000 kg | 6.000 kg | 9.000 kg |
| Max. Sheet Loading Height | 250 mm | 250 mm | 250 mm |
| Cycle Time | 50 sec | 70 sec | 90 sec |
| Workspace | 6.950 x 5.200 mm h= 3.400 mm | 8.000 x 18.500 mm h=3.850 mm | 8.000 x 24.750 mm h=3.850 mm |
| Dual Sheet Sensor | Yes | Yes | Yes |
| Sheet Separation System | Yes | Yes | Yes |



DURMA TOWER 3015 / 4020 / 6020

| Teknik Özellikler | 3015 | 4020 | 6020 |
|--|--------------------------------------|--|---|
| Sheet Sizes | 800 - 800 mm | 1.000 - 1.000 mm | 1.000 - 1.000 mm |
| Length | 1.000, 1.500, 2.000, 2.500, 3.000 mm | 1.000, 1.500, 2.000, 2.500, 3.000, 3.500, 4.000 mm | 1.000, 1.500, 2.000, 2.500, 3.000, 3.500, 4.000, 6.000 mm |
| Width | 1.000, 1.250, 1.500 mm | 1.000, 1.250, 1.500, 2.000 mm | 1.000, 1.250, 1.500, 2.000 mm |
| Thickness | 0,5 - 25 mm | 0,5 - 25 mm | 0,5 - 25 mm |
| Max. Sheet Size | 3.050 x 1.525 mm | 4.064 x 2.032 mm | 6.096 x 2.032 mm |
| Max. Sheet Metal Loading Weight That Can Be Loaded On The Pallet | 3.000 kg | 4.000 kg | 5.000 kg |
| Pallet Numbers | 10 | 10 | 10 |
| Total Loadable Sheet Weight | 30.000 kg | 40.000 kg | 50.000 kg |
| Max. Sheet Loading Height | 85 mm | 85 mm | 85 mm |
| Cycle Time | 50 sec | 60 sec | 90 sec |
| Workspace | 6.950 x 5.200 mm h= 3.400 mm | 8.000 x 18.500 mm h=3.850 mm | 8.000 x 24.750 mm h=3.850 mm |
| Dual Sheet Sensor | Yes | Yes | Yes |
| Sheet Separation System | Yes | Yes | Yes |
| Electric Power | 23 kW | 38 kW | 40 kW |
| Compressed Air | 1.400 lt/min. - 7 bar | 1.400 lt/min. - 7 bar | 1.400 lt/min. - 7 bar |



SPECIAL APPLICATIONS



Endüstri Makineleri



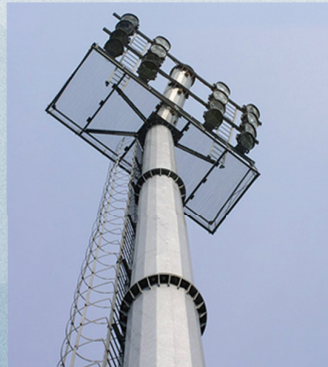
Fason Sac Kesim Merkezleri



Damper Treyler



Aydınlatma ve Enerji Direkleri



Fast on Service and Spare Parts

DURMA provides the best level of service and spare parts with qualified personnel and spare parts in stock. Our experienced and professional service personnel are always ready at your service. Our professional training and application enriched courses will give you an advantage to use our machinery.



Consultancy



Spare Parts



R&D Center



After Sales Service



Service Agreements



Software



Training



Flexible Solution

DURMA



PANEL BENDER



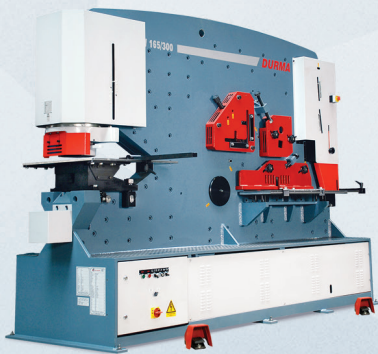
PUNCH



PLASMA



L ANGLE PROCESSING CENTER

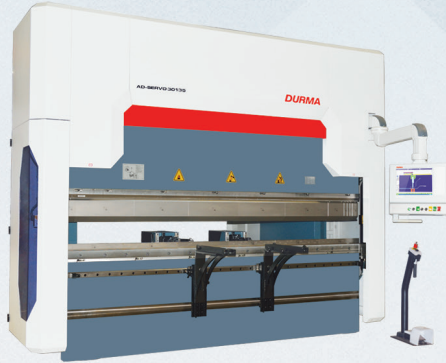


IRON WORKER

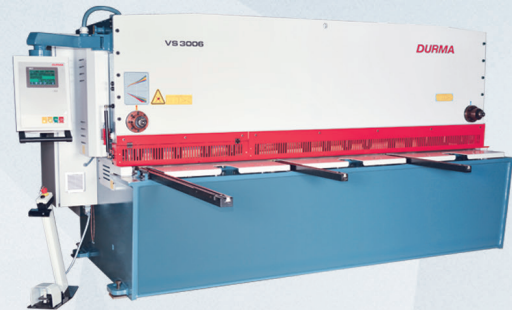


POWER OPERATED SHEAR

DURMA



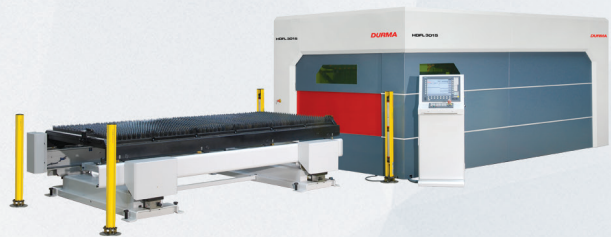
PRESS BRAKE



VARIABLE RAKE SHEAR



TUBE LASER CUTTING



FIBER LASER



ROLL BENDING



PROFILE BENDING



CORNER NOTCHER

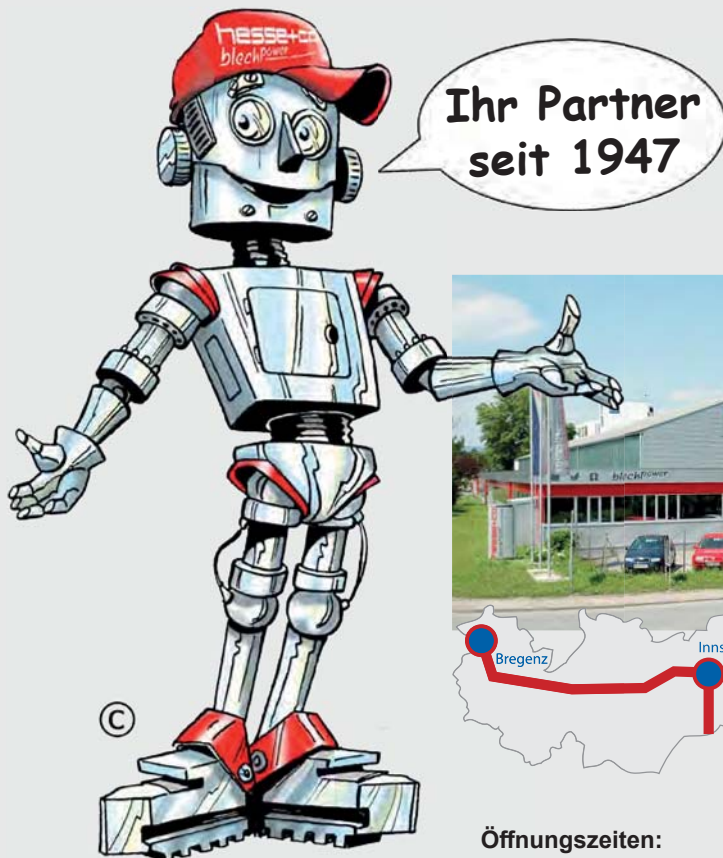
Vertrauen Sie auf über 70 Jahre Erfahrung!

Die Firma HESSE+CO wurde 1947 als Hersteller von Blechbearbeitungsmaschinen gegründet. Seit 1980 sind wir auf den Handel mit neuen sowie gebrauchten Blechbearbeitungs- und Werkzeugmaschinen spezialisiert. Wir haben ständig etwa 300 Maschinen in unserer 2.000 m² großen Ausstellungshalle, die nur 20 Minuten vom internationalen Flughafen Wien entfernt ist.

Trust in more than 70 years of experience!

HESSE+CO was established in 1947 as a manufacturer of sheet metal working machines. Since 1980 we are specialized in dealing with new and second hand sheet metal processing machines and machine tools. We always have approximately 300 machines available in our 2.000 m² showroom, which is located only 20 minutes from the Vienna International Airport, waiting for your inspection.

www.hesse-maschinen.com



Öffnungszeiten:

Mo - Do 8:00 - 16:30 Uhr
Fr 8:00 - 14:30 Uhr

HESSE+CO Maschinenfabrik GmbH
Industriezentrum NÖ-Süd
Straße 4 - Objekt 8
A-2351 Wiener Neudorf
AUSTRIA

hesse **hesse+co**
blechpower
maschinen und werkzeuge

Technische Änderungen, Irrtum und Druckfehler vorbehalten.
Gültig bis auf Widerruf.

Tel.: +43/2236/638 70-0
Fax: +43/2236/636 62
office@hesse-maschinen.com
www.hesse-maschinen.com
www.blechpower.com