

PL US SE RIES

10 years of development work – we are

Our new Plus Series drilling machines offer simple, intuitive operation thanks to sophisticated technology and lots of new functions.

This modular system is the result of 10 years of development work and many years of experience in drilling technology.

In close cooperation with our suppliers, in particular:

Carlton Clemente GmbH
www.carlton.de

habemus! electronic + transfer GmbH
www.habemus.com

customer requests and specifications from day-to-day manufacturing work are implemented in the new machines.

The Plus Series is divided into three platforms:

1. Small bench drills and column drill presses 10 - 15 Plus
2. Medium bench drills and column drill presses 18 - 25 Plus
3. Large bench drills and column drill presses 30 - 40 Plus

The control system with display and rotary knob is consistent across all the Plus drilling machines.

Once an operator has received training, they can work with any of the machines straight away.

The A-parts of the mechanics, such as spindles, tail spindles, drill bit processing, are manufactured in Remscheid in Bökerbau and seamlessly transferred to the assembly line. This guarantees short distances and the highest quality and precision.

This is the basis for the 3-year manufacturer's guarantee for single-shift operation (on request, this can be extended up to 5 years, subject to an additional charge).

The belt drive* with German quality motors, frequency converters and innovative electronics creates high-performance drilling machines with high torque values and a variable range of speeds.



*Optionally with electromagnetic double coupling. (Series of speeds R3)

Proud of the new Plus Series



Our Plus Series with clear benefits:

- ▶ Convenient operator-machine interface with 4,3" touchscreen display for optimised user convenience (NC Plus).
- ▶ Robust, high-quality rotary hood with ergonomically inclined front panel for easier reading and entry of machine and process parameters.
- ▶ The newly developed drive and gear train guarantees maximum power with its integrated frequency converter.
- ▶ Speed can be continuously adjusted via the central control dial.
- ▶ All safety features comply with the current requirements and guidelines of the Industrial Safety Ordinance.
- ▶ All machines are equipped with LED lighting as standard.
- ▶ Standard interfaces ensure that additional devices can be connected and that there is an option for integrating and interlinking in production lines.
- ▶ Thread cutting device
(except TB 10 Eco Plus and TB 10 Basic Plus).
- ▶ Deactivatable/activatable spindle stop
(except TB 10 Eco Plus and TB 10 Basic Plus).



Spotlight on our best features!



Control panel with display

Consistent throughout all the Plus machines

The menu functions

- ▶ Clear input menu that is easy to understand
- ▶ Select the mode of operation between drilling and thread cutting
- ▶ Set the speed using the central knob
- ▶ Precise display of the drill depth (target, actual) (switchable mm/inches), speed
- ▶ Counting function for drilling stroke
- ▶ Intelligent memory function for the parameters
- ▶ Energy-saving mode
- ▶ Spindle stop

Main switch



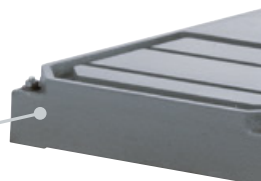
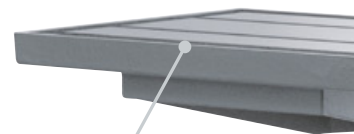
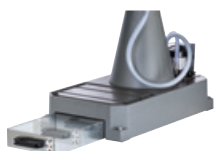
Additional panel with touchscreen operation

- ▶ Plus technology
- ▶ Programmable z-axis NC Plus
- ▶ The 4.3" touchscreen display is a convenient operator-machine interface for programming the z-axis (feed/return).
- ▶ You can select between the following operating modes:
 - Drilling
 - Grating
 - Countersinking
 - Flow drilling
 - Thread cutting possible from M1.5 to M30
- Free programming option



Large table working area

Machined base plate with integrated coolant system (optional)





Cover with hinges to the side

- Serviceability
- Easy access to electronics and belt drive

Automatic feed drive with motor

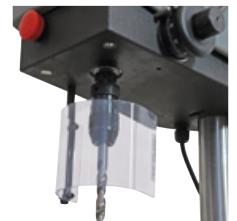
This precise drive facilitates the cutting of M1.5 threads without compensation chuck thanks to the synchronisation with the spindle speed.

Switch lever for automatic / manual



Efficient LED illumination as standard

The positioning of the Power LEDs in the front area of the machine illuminates the drill hole. The work piece does not create any disruptive shadows. Direct glare is prevented by the positioning of the LEDs.



Patented drilling machine vice (optional)



Column diameter 140 mm

Figure SB 40 NC Plus
with option

FLOTT [felix]



TB 10 Eco ►Plus

TB 10 Basic ►Plus

Turbodrill

TB 10 ►Plus

3-year warranty for single-shift operation

(on request, this can be
extended up to 5 years,
subject to an additional
charge)



Figure with
option



Figure with
option



Figure with
option



Figure with
option

Technical data	TB 10 Eco Plus	TB 10 Basic Plus	Turbodrill	TB 10 Plus
Drilling capacity / normal drilling performance (mm) in E335/ ST60	10/12	10/12	6/8	10/12
Max. thread cutting performance *(depends on gradient)	--	--	M5 *	M6 *
Spindle holder	B16	B16	B12	B16
Drilling depth (mm)	50	60	60	60
Distance column-spindle (mm)	180	220	220	220
Column diameter (mm)	50	70	70	70
Speed/drilling depth display	Digital/scale	Digital/scale	Digital/digital	Digital/digital
Drilling depth stop	Thrust ring (positive-locking)	Thrust ring (positive-locking)	Thrust ring (positive-locking)	Thrust ring (positive-locking)
Feed (mm/rotation)	By hand	By hand	By hand	By hand
Drill bit/table height adjustment	Drill head height adjustment manual	Drill head height adjustment manual	Drill head height adjustment manual	Drill head height adjustment manual
Useable working area W x L (mm)	300 x 200	300 x 250	300 x 250	300 x 250
Spindle speed, stepless (1/min)	250-3,000	250-3,000	100-10,000	60-6,000
Mains voltage (V/Hz)	230/50-60	230/50-60	230/50-60	230/50-60
Drive (kW)	Single-phase motor 0.45	Single-phase motor 0.45	Three-phase motor 0.54 Frequency-regulated	Three-phase motor 0.54 Frequency-regulated
Dimensions (mm)	400 x 248 x 460	320 x 520 x 820	320 x 520 x 820	320 x 520 x 820
Weight without VP (kg)	30	44	44	44
Order number	217.200	217.400	212.506	212.505

TB 13

►Plus

TB 15

►Plus

TB 18

►Plus

TB 20

►Plus



3-year warranty for single-shift operation

(on request, this can be extended up to 5 years, subject to an additional charge)



Figure with option



Figure with option



Figure with option



Figure with option

Technical data	TB 13 Plus	TB 15 Plus	TB 18 Plus	TB 20 Plus
Drilling capacity / normal drilling performance (mm) in E335/ ST60	13/15	15/18	18/20	20/23
Max. thread cutting performance *(depends on gradient)	M10 *	M12 *	M12 *	M14 *
Spindle holder	B16, optional MK II	MK II	MK II	MK II
Drilling depth (mm)	60	70	100	100
Distance column-spindle (mm)	220	220	240	240
Column diameter (mm)	70	70	82	82
Speed/drilling depth display	Digital/digital	Digital/digital	Digital/digital	Digital/digital
Drilling depth stop	Thrust ring (positive-locking)	Thrust ring (positive-locking)	Thrust ring (positive-locking)	Thrust ring (positive-locking)
Feed (mm/rotation)	By hand	By hand	By hand	By hand
Drill bit/table height adjustment	Table height adjustment Via toothed rack	Table height adjustment Via toothed rack	Table height adjustment Via toothed rack	Table height adjustment Via toothed rack
Useable working area W x L (mm)	300 x 250	300 x 250	340 x 280	340 x 280
Spindle speed, stepless (1/min)	40-4,000	40-4,000	30-3,000	40-4,000
Mains voltage (V/Hz)	230/50-60	230/50-60	230/50-60	400/50-60
Drive (kW)	Three-phase motor 0.54 Frequency-regulated	Three-phase motor 0.75 Frequency-regulated	Three-phase motor 0.75 Frequency-regulated	Three-phase motor 1.5 Frequency-regulated
Dimensions (mm)	400 x 520 x 850	400 x 520 x 850	355 x 705 x 1,620	355 x 705 x 1,620
Weight without VP (kg)	62	62	170	170
Order number	B16 212.500 MK II 212.503	212.755	218.303	220.105
	also available as TBZ and SB	also available as TBZ and SB	also available as TBZ and SB	also available as TBZ and SB

SB 23

► Plus

SB 25

► Plus

SB 30

► Plus

SB 30 MV

► Plus



Figure with option



Figure with option



Figure with option



Figure with option

3-year warranty for single-shift operation

(on request, this can be extended up to 5 years, subject to an additional charge)

Technical data	SB 23 Plus	SB 25 Plus	SB 30 Plus	SB 30 MV Plus
Drilling capacity / normal drilling performance (mm) in E335/ ST60	R1 23/25 R2 20/23	23/25	R1 27/32 R2 25/30 R3 30/35	R1 27/32 R2 25/30 R3 30/35
Max. thread cutting performance *(depends on gradient)	R1 M16x1* R2 M12*	M16x1*	R1 M24x3* R2 M20x2.5* R3 M30x3.5*	R1 M24x3* R2 M20x2.5* R3 M30x3.5*
Spindle holder	MK II	MK III	MK III	MK III
Drilling depth (mm)	100	115	125	125
Distance column-spindle (mm)	260	260	300	300
Column diameter (mm)	110	110	125	125
Speed/drilling depth display	Digital/digital	Digital/digital	Digital/digital	Digital/digital
Drilling depth stop	Thrust ring (positive-locking)	Thrust ring (positive-locking)	Drilling depth stop with fine adjustment	Drilling depth stop with fine adjustment
Feed (mm/rotation)	By hand	By hand	By hand	0.10/0.16/0.25
Drill bit/table height adjustment	Table height adjustment Via toothed rack	Table height adjustment Via toothed rack	Table height adjustment Via toothed rack	Table height adjustment Via toothed rack
Useable working area W x L (mm)	420 x 340	420 x 340	590 x 450	590 x 450
Spindle speed, stepless (1/min)	R1 20-2,000 R2 30-3,000	20-2,000	R1 0-1,000 R2 0-1,600 R3 0-4,000	R1 0-1,000 R2 0-1,600 R3 0-4,000
Mains voltage (V/Hz)	400/50-60	400/50-60	400/50-60	400/50-60
Drive (kW)	Three-phase motor 1.5 Frequency-regulated	Three-phase motor 1.5 Frequency-regulated	Three-phase motor 3.0 Frequency-regulated	Three-phase motor 3.0 Frequency-regulated
Dimensions (mm)	430 x 715 x 1,800	430 x 715 x 1,800	610 x 900 x 1,980	610 x 900 x 1,980
Weight without VP (kg)	290	290	370	385
Order number	R1 223.020 R2 223.025	225.010	R1 230.500 R2 230.501 R3 230.502	R1 230.505 R2 230.506 R3 230.507
	also available as TB and TBZ	also available as TB and TBZ		

SB 30 NC

►Plus

SB 40

►Plus

SB 40 MV

►Plus

SB 40 NC

►Plus

3-year warranty for single-shift operation

(on request, this can be extended up to 5 years, subject to an additional charge)



Figure with option



Figure with option



Figure with option



Figure with option

Technical data	SB 30 NC Plus	SB 40 Plus	SB 40 MV Plus	SB 40 NC Plus
Drilling capacity / normal drilling performance (mm) in E335/ ST60	R1 27/32 R2 25/30 R3 30/35	R1 30/35 R2 27/32 R3 35/40	R1 30/35 R2 27/32 R3 35/40	R1 30/35 R2 27/32 R3 35/40
Max. thread cutting performance *(depends on gradient)	R1 M24 x 3* R2 M20 x 2.5* R3 M30 x 3.5*	R1 M30 x 3.5* R2 M24 x 3* R3 M36 x 4*	R1 M30 x 3.5* R2 M24 x 3* R3 M36 x 4*	R1 M30 x 3.5* R2 M24 x 3* R3 M36 x 4*
Spindle holder	MK III	MK IV	MK IV	MK IV
Drilling depth (mm)	125	160	160	160
Distance column-spindle (mm)	300	300	300	300
Column diameter (mm)	125	140	140	140
Speed/drilling depth display	Digital/digital	Digital/digital	Digital/digital	Digital/digital
Drilling depth stop	Drilling depth stop with fine adjustment	Drilling depth stop with fine adjustment	Drilling depth stop with fine adjustment	Drilling depth stop with fine adjustment
Feed (mm/rotation)	Freely programmable (0-1.5 m/min) Feed/return stroke, infinitely variable	By hand	0.10/0.16/0.25	Freely programmable (0-1.5 m/min) Feed/return stroke, infinitely variable
Drill bit/table height adjustment	Table height adjustment Via toothed rack	Table height adjustment Via toothed rack	Table height adjustment Via toothed rack	Table height adjustment Via toothed rack
Useable working area W x L (mm)	590 x 450	590 x 450	590 x 450	590 x 450
Spindle speed, stepless (1/min)	R1 0-1,000 R2 0-1,600 R3 0-4,000	R1 0-1,000 R2 0-1,600 R3 0-4,000	R1 0-1,000 R2 0-1,600 R3 0-4,000	R1 0-1,000 R2 0-1,600 R3 0-4,000
Mains voltage (V/Hz)	400/50-60	400/50-60	400/50-60	400/50-60
Drive (kW)	Three-phase motor 3.0 Frequency-regulated	Three-phase motor 4.0 Frequency-regulated	Three-phase motor 4.0 Frequency-regulated	Three-phase motor 4.0 Frequency-regulated
Dimensions (mm)	610 x 900 x 1,980	610 x 900 x 1,980	610 x 900 x 1,980	610 x 900 x 1,980
Weight without VP (kg)	400	400	420	440
Order number	R1 230.510 R2 230.511 R3 230.512	R1 230.530 R2 230.531 R3 230.532	R1 230.535 R2 230.536 R3 230.537	R1 230.540 R2 230.541 R3 230.542
	includes additional panel for automatic mode			includes additional panel for automatic mode

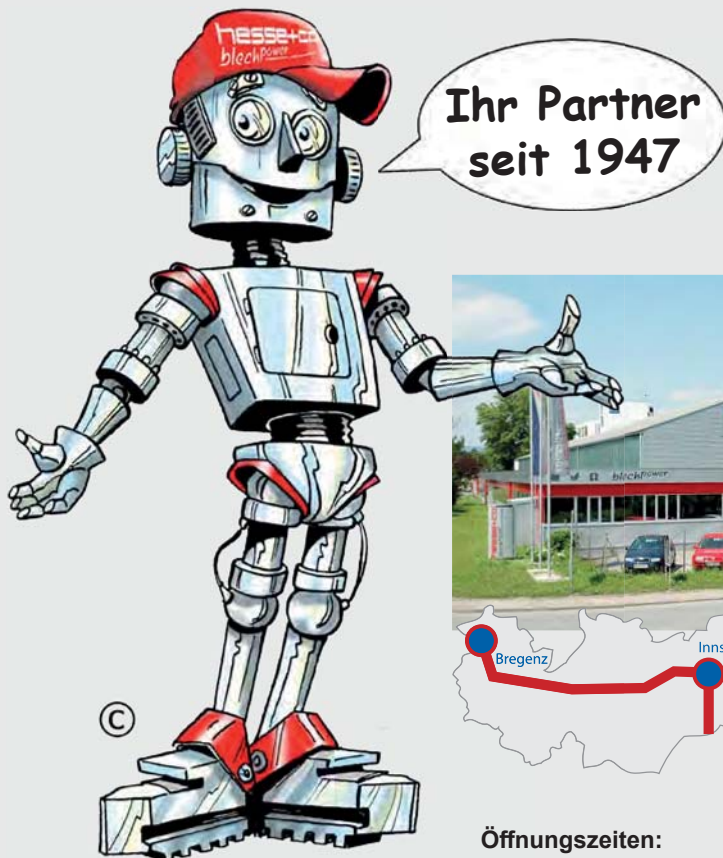
Vertrauen Sie auf über 70 Jahre Erfahrung!

Die Firma HESSE+CO wurde 1947 als Hersteller von Blechbearbeitungsmaschinen gegründet. Seit 1980 sind wir auf den Handel mit neuen sowie gebrauchten Blechbearbeitungs- und Werkzeugmaschinen spezialisiert. Wir haben ständig etwa 300 Maschinen in unserer 2.000 m² großen Ausstellungshalle, die nur 20 Minuten vom internationalen Flughafen Wien entfernt ist.

Trust in more than 70 years of experience!

HESSE+CO was established in 1947 as a manufacturer of sheet metal working machines. Since 1980 we are specialized in dealing with new and second hand sheet metal processing machines and machine tools. We always have approximately 300 machines available in our 2.000 m² showroom, which is located only 20 minutes from the Vienna International Airport, waiting for your inspection.

www.hesse-maschinen.com



Öffnungszeiten:

Mo - Do 8:00 - 16:30 Uhr
Fr 8:00 - 14:30 Uhr

HESSE+CO Maschinenfabrik GmbH
Industriezentrum NÖ-Süd
Straße 4 - Objekt 8
A-2351 Wiener Neudorf
AUSTRIA

hesse **hesse+co**
blechpower
maschinen und werkzeuge

Technische Änderungen, Irrtum und Druckfehler vorbehalten.
Gültig bis auf Widerruf.

Tel.: +43/2236/638 70-0
Fax: +43/2236/636 62
office@hesse-maschinen.com
www.hesse-maschinen.com
www.blechpower.com