

AD-S

Hydraulic Press Brakes

Series



Perfect Precision

Deep And Fast Bending

Efficient

Winning

Elegant Design



As a total supplier for sheet metal manufacturing with almost 70 years of experience, Durma understands and recognizes the challenges, requirements and expectations of the industry. We strive to satisfy the ever higher demands of our customers by continuously improving our products and processes while researching and implementing the latest technologies

In our three production plants with a total of 150.000 m², we dedicate 1,000 employees to delivering high quality manufacturing solutions at the best performance-to-price ratio in the market.



PRODUCTION IS
MORE EFFECTIVE NOW

From the innovations developed at our Research & Development Center to the technical support given by our worldwide distributors, we all have one common mission: to be your preferred partner.

Durmazlar offers it's machines to the world markets under the Durma brand.



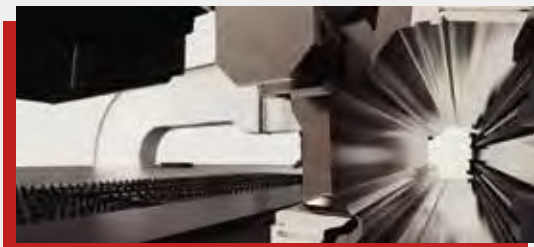
1

High technology,
modern production
lines



2

Top quality
components



3

High quality
machines designed
in R&D Centre

AD-S

Feel The Force and Performance

Our Machines are shaped with our superior experience and state of art technology, special designed as well as excellent combined component its the fastest , most reliable and prices press brakes on its category. With its rigid body structure, robust back gauge and high standard components it ensures long lasting and precision applications.

Therefore with *DURMA* press brakes you can always achieve perfect result.



Fast, Precise and Perfect Bending

- Precise bending result at fast speed
- Minimalized tool change and adjustment time
- Maximized speed and safety



Production is *More Effective Now.*

AD-S Series Hydraulic Press Brake



Perfect and Fast Bending

Perfect components for precision

With Easy to use control unit, stable body structure, perfect design, low operating cost, different tool usage options, maximum safety standards, DURMA press brake is the best in the world in its segment.



Why DURMA Press Brakes

- Better and faster bending
- Stronger and rigid body structure
- High sensitivity and repeatability
- High technology excellent equipment
- Low service cost
- Reliability



AD-S

FAST, EFFICIENT, MODERN

AD-S Series hydraulic press brakes, designed with high technology to increase efficiency on precise part bending. Quality approved components. Stress relieved for long life and precise bending.



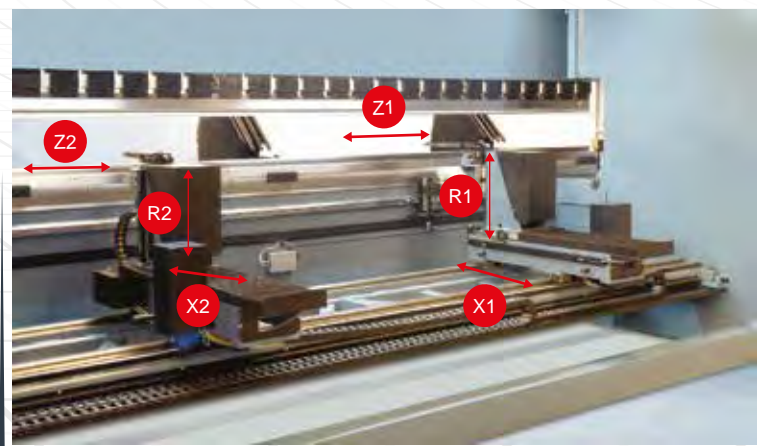
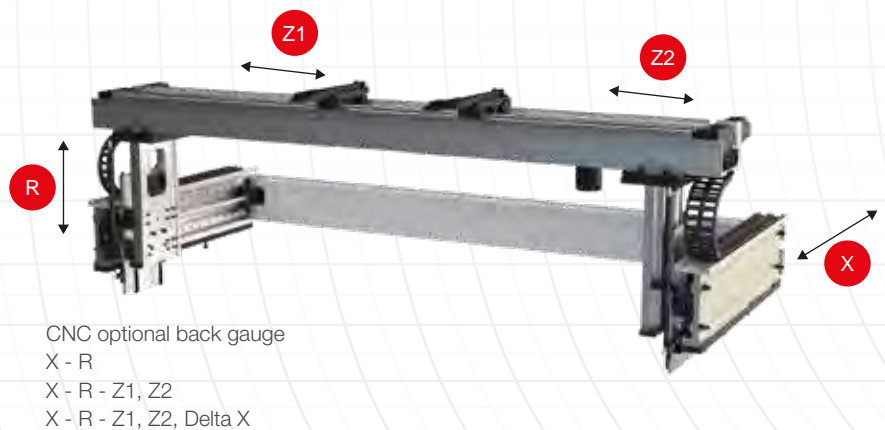
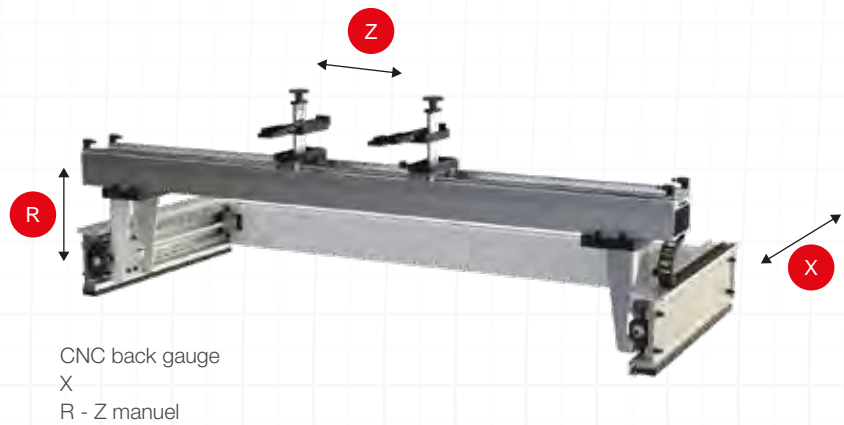
General Specifications

- High sensitivity, Stress relieved steel construction body, long life Mono Block Frame
- Automatic calibration and first start up
- DURMA designed and copyrighted guiding system
- Ball Screw and linear guide integrated perfect back gauge system
- Durable, long life and sensitive bending capable special hardened top tools
- Suitable for segmented tools special and fast tool holding system
- Sensitive solutions on long and deep bending
- High accuracy linear scales
- CE safety standards
- Best quality world wide accepted hydraulic and electric components

STRONG BACK GAUGE SYSTEM

- Precise
- Reliable
- Strong

- Fast and high accuracy
- Safe movement
- Resistance to crash
- Maintenance free
- Adjustment availability at every point



CNC optional back gauge
X1 - X2, R1 - R2, Z1 - Z2

Why DURMA Back Gauge ?

The most important feature to achieve perfect bending is the stability and the design of the back gauge, which allows an impeccable and correct product to be produced.

The high speed **double ballscrew** back gauge system movement is also supported with **double linear guides**, which helps the back gauge achieve long life, greater sensitivity and strengthens against any collisions.

Special designed finger blocks with steps to achieve maximum stability can also be supplied for every kind of bending solution.

TOOL HOLDERS AND TOOLS

Bending performance increased using with high quality European clamping system and easy to use. Narrow table designed for European style tool holder and Z bending.

DURMA is your solution partner with various tool options.



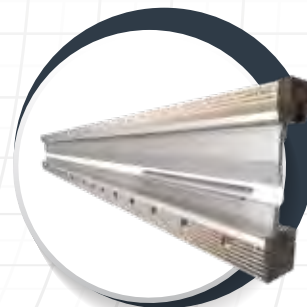
European
Clamping System



European Type
Bottom Tool (4V Die)



Quick
Release Clamping



DURMA Hydraulic
Holder



DURMA Top
Tool Holder



DURMA Multi
V Bottom Tool

SAFE AND ACCURATE BENDS WITH TOP QUALITY EQUIPMENTS

■ Crowning System

Manual or CNC-controlled motorized crowning system simplifies bending, by adjusting each point of the bending parts to acquire straight bends. The need for shimming is eliminated.



CNC Crowning System

■ Linear Guide Front Sheet Supports

Rugged support arms with tilting stops are mounted on a linear guide rail system. This allows 'finger-tip' lateral adjustment as required by the bend length of the part. They are also equipped with side gauges for the fast, easy, and accurate feeding of parts small or large.



Linear Guide Front Sheet Supports

■ CE Safety Systems

Our machines are designed in accordance with CE-Norms to ensure your safety with hydraulic, electric, appropriate height covers and laser light curtains. CE safety in tandem machines are also provided with light barriers.



CE Laser Safety System

■ Stable Top Beam Movement

By using long and planar guiding surfaces, all the disadvantages of point guiding are eliminated 100% free bending space: guiding system that eliminates bending between frame has been moved to the outside of the frame.



90 Degree Endless Bend

NOW BENDING IS MORE EASIER

■ SKY 22 (Optional)



- 21.5" TFT color touch screen with USB port and backup
- Automatic bending order
- Perfect control of electrical servo systems
- Archiving user bendings
- 2D/3D color graphics display and multi-simulation
- Windows 10 operating system
- D-Bend offline software
- Tandem applications
- Network interface
- X1-X2-R1-R2-Z1-Z2 and AP3-AP4 part support system
- DURMA laser angle measurement system compatible
- 2D / 3D part & tool import
- Robot integration compatible

■ DT 15 (Standard)



- Ergonomic panel design
- 15" color touchscreen
- Manual profiling on the touchscreen
- Diagnostic mode
- Easy programming mode
- Automatic bend sorting
- Multi-language option
- Tool programming and library
- D-Bend offline software
- Tandem compatible
- Internet service facility

■ DA-66T (Optional)



- 2D graphical touch screen programming mode
- 3D visualisation in simulation and production
- 17" high resolution colour TFT
- Full Windows application suite
- Delem modusys compatibility
- USB, peripheral interfacing
- User specific application support within the controllers multitasking environment
- Sensor bending & correction interface
- Profile - TL - software

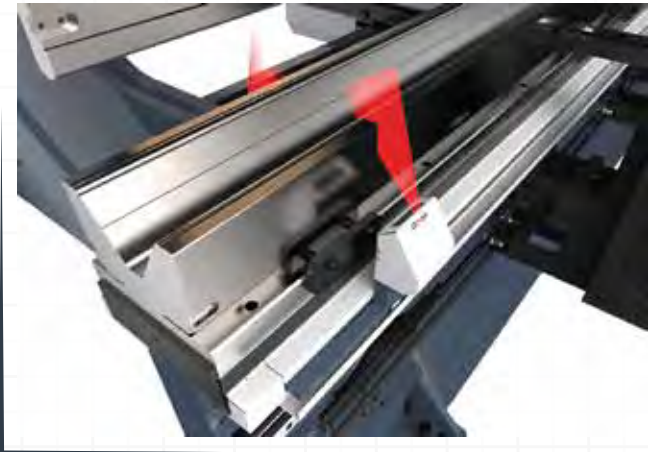
■ DA-69S (Optional)



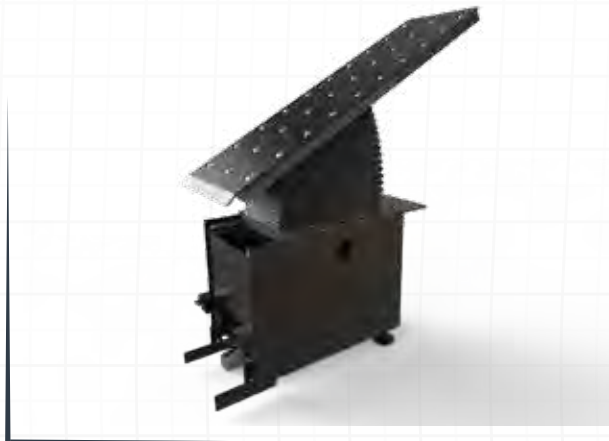
- 24" TFT screen, 1920 x 3080 pixels, 32 bit colour,
- Real-time Linux embedded OS
- Full touch screen control
- Storage capacity 2 GB
- Network connectivity
- Delem modusys compatible
- Tandem operation
- 2D/3D real-scale product programming and visualisation
- Automatic bending calculation 2D/ 3D
- DXF part & tool import support

Production is *More Effective Now.*

■ System of DURMA Angle Measurement



■ Automatic AP3 - AP4 Sheet Follower



■ Robotic System of Applications





AD-S 40320

SPECIAL PROJECTS

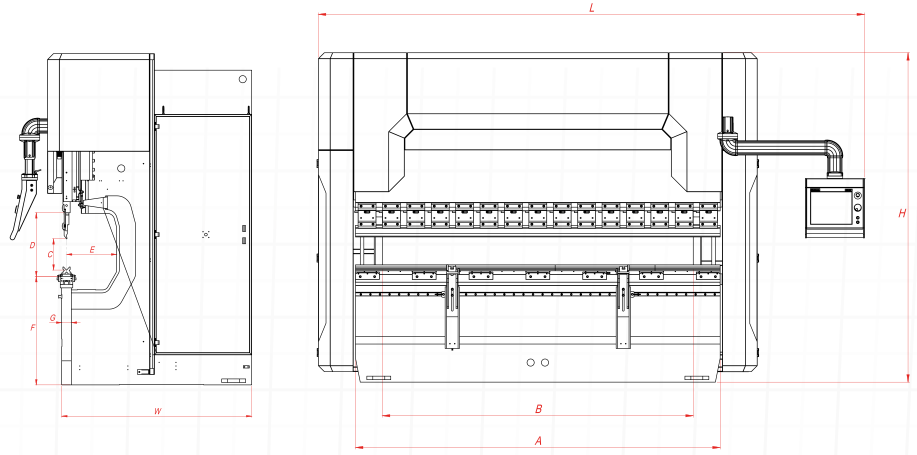


AD-S

AD-S SERIES TECHNICAL DETAILS

| AD-S Series | Bending Force | Bending Length | Distance Between Columns | Stroke | Daylight | Throat Depth | Table Height | Table Width (Narrow / Wide) | Working Speed | | Y Axis Precision | X Axis Working Speed | |
|-------------|---------------|----------------|--------------------------|--------|----------|--------------|--------------|------------------------------|---------------|-----------------|------------------|----------------------|----------------|
| | | | | | | | | | Y Rapid Speed | Y Working Speed | | | Y Return Speed |
| | | | | | | | | | Ton | mm | | | mm |
| | A | B | C | D | E | F | G | | | | | | |
| AD-S 1260 | 60 | 1250 | 1050 | 160 | 400 | 350 | 900 | 104 | 200 | 10 | 110 | 0,01 | 500 |
| AD-S 2060 | 60 | 2050 | 1700 | 265 | 530 | 450 | 900 | 104 | 200 | 10 | 110 | 0,01 | 500 |
| AD-S 25100 | 100 | 2550 | 2200 | 265 | 530 | 450 | 900 | 104 | 180 | 10 | 120 | 0,01 | 500 |
| AD-S 30100 | 100 | 3050 | 2600 | 265 | 530 | 450 | 900 | 104/180 | 180 | 10 | 120 | 0,01 | 500 |
| AD-S 30135 | 135 | 3050 | 2600 | 265 | 530 | 450 | 900 | 104/180 | 160 | 10 | 120 | 0,01 | 500 |
| AD-S 30175 | 175 | 3050 | 2600 | 265 | 530 | 450 | 900 | 104/240 | 160 | 10 | 100 | 0,01 | 500 |
| AD-S 30220 | 220 | 3050 | 2600 | 265 | 530 | 450 | 900 | 104/240 | 140 | 10 | 140 | 0,01 | 500 |
| AD-S 30320 | 320 | 3050 | 2600 | 365 | 630 | 450 | 900 | 154/300 | 160 | 10 | 140 | 0,01 | 500 |
| AD-S 37175 | 175 | 3700 | 3100 | 265 | 530 | 450 | 900 | 104/240 | 140 | 10 | 100 | 0,01 | 500 |
| AD-S 37220 | 220 | 3700 | 3100 | 265 | 530 | 450 | 900 | 104/240 | 160 | 10 | 120 | 0,01 | 500 |
| AD-S 40175 | 175 | 4050 | 3600 | 265 | 530 | 450 | 900 | 104/240 | 160 | 10 | 140 | 0,01 | 500 |
| AD-S 40220 | 220 | 4050 | 3600 | 265 | 530 | 450 | 900 | 104/240 | 160 | 10 | 140 | 0,01 | 500 |
| AD-S 40320 | 320 | 4050 | 3600 | 365 | 630 | 450 | 900 | 154/300 | 160 | 10 | 140 | 0,01 | 500 |
| AD-S 40400 | 400 | 4050 | 3400 | 365 | 630 | 510 | 1050 | 154/300 | 140 | 8 | 120 | 0,01 | 350 |
| AD-S 60220 | 220 | 6050 | 5100 | 265 | 530 | 450 | 1050 | 154/300 | 140 | 10 | 120 | 0,01 | 350 |
| AD-S 60400 | 400 | 6050 | 5100 | 365 | 630 | 510 | 1220 | 154/300 | 120 | 8 | 100 | 0,01 | 350 |

Production is *More Effective Now.*



| X Axis Precision | X Axis Distance | | | R Axis Working Speed | R Axis Working Distance | R Axis Precision | Z Axis Working Speed | Z Axis Working Distance | Motor Power | Oil Tank Capacity | Length | Width | Height | Weight Approx. |
|------------------|-----------------|-----|------|----------------------|-------------------------|------------------|----------------------|-------------------------|-------------|-------------------|--------|-------|--------|----------------|
| | 650 | 750 | 1000 | | | | | | | | | | | |
| mm | mm | mm | mm | mm/sec | mm | mm | mm/sec | mm | kW | lt | mm | mm | mm | kg |
| 0,05 | S | - | O | 350 | 250 | 0,1 | 1000 | 490 | 7,5 | 100 | 2300 | 1550 | 2350 | 4700 |
| 0,05 | S | - | O | 350 | 250 | 0,1 | 1000 | 1100 | 7,5 | 100 | 3200 | 1550 | 2850 | 5600 |
| 0,05 | S | - | O | 350 | 250 | 0,1 | 1000 | 1580 | 11 | 100 | 3800 | 1670 | 2850 | 7800 |
| 0,05 | S | - | O | 350 | 250 | 0,1 | 1000 | 1990 | 11 | 100 | 4200 | 1670 | 2850 | 8500 |
| 0,05 | S | - | O | 350 | 250 | 0,1 | 1000 | 1990 | 15 | 150 | 4200 | 1680 | 2850 | 9580 |
| 0,05 | S | - | O | 350 | 250 | 0,1 | 1000 | 1990 | 18,5 | 250 | 4250 | 1700 | 2850 | 10900 |
| 0,05 | S | - | O | 350 | 250 | 0,1 | 1000 | 1990 | 22 | 250 | 4250 | 1770 | 3000 | 12600 |
| 0,05 | S | - | O | 350 | 250 | 0,1 | 1000 | 1990 | 37 | 250 | 4300 | 1820 | 3330 | 17100 |
| 0,05 | S | - | O | 350 | 250 | 0,1 | 1000 | 2375 | 18,5 | 250 | 4950 | 1700 | 3000 | 11750 |
| 0,05 | S | - | O | 350 | 250 | 0,1 | 1000 | 2375 | 22 | 250 | 4950 | 1770 | 3000 | 14440 |
| 0,05 | S | - | O | 350 | 250 | 0,1 | 1000 | 2910 | 18,5 | 250 | 5250 | 1700 | 2850 | 12780 |
| 0,05 | S | - | O | 350 | 250 | 0,1 | 1000 | 2910 | 22 | 250 | 5250 | 1770 | 3000 | 14750 |
| 0,05 | S | - | O | 350 | 250 | 0,1 | 1000 | 2910 | 37 | 250 | 5300 | 1910 | 3330 | 20000 |
| 0,05 | - | S | O | 300 | 250 | 0,1 | 1000 | 2670 | 37 | 500 | 5750 | 2110 | 3640 | 27760 |
| 0,05 | - | S | O | 300 | 250 | 0,1 | 1000 | 4400 | 22 | 250 | 7500 | 1770 | 3350 | 20800 |
| 0,05 | - | S | O | 300 | 250 | 0,1 | 1000 | 4400 | 37 | 500 | 7500 | 2110 | 3810 | 34600 |

S : Standard

O : Optional

AD-S



*Production is **More Effective Now.***



STANDARD & OPTIONAL EQUIPMENT

Standard Equipment

- Y1, Y2, X - 3 Axis Control Unit - DT 15
- Manual F. AKAS FPBS Security system
- Servo motor back gauge & linear guided & ballscrew system (X)
- Manual Crowning system
- European style tool clamping system
- Sliding front arms
- World standards special design hydraulic block and valves
- World standard electric equipment

Optional Equipment

- Control Unit - DA 66T - 69S - Sky 22
- Motorized F. AKAS - 3P FPSC (Safety PLC)
- F.AKAS LC-5 Security system
- Manual F. AKAS FPSC Security system
- CE F.AKAS BVLTLight barrier and safety cages (For Tandem Press Brake)
- Delta X Axis 125 stroke
- X Axis = 1000 mm - light barrier back protection
- AP3-AP4 Automatic system of sheet follower - Motorized elevation adjustment
(There is a motorized elevation adjustment of 220 tons or more.)
- Durma laser angle measurement
- DBEND 3D bending simulation program
- Quick release clamping system
- Hydraulic and pneumatic tool clamping systems
- Parking area
- Central lubrication system manual / automatic
- Oil cooler / Oil heater
- Additional back gauge finger and sliding front support arms
- Special packing for overseas shipments

Production is *More Effective Now.*

FAST ON SERVICE AND SPARE PARTS

DURMA provides the best level of service and spare parts with qualified personnel and spare parts in stock. Our experienced and professional service personnel are always ready at your service. Our professional training and application enriched courses will give you an advantage to use our machinery.



Vertrauen Sie auf über 70 Jahre Erfahrung!

Die Firma HESSE+CO wurde 1947 als Hersteller von Blechbearbeitungsmaschinen gegründet. Seit 1980 sind wir auf den Handel mit neuen sowie gebrauchten Blechbearbeitungs- und Werkzeugmaschinen spezialisiert. Wir haben ständig etwa 300 Maschinen in unserer 2.000 m² großen Ausstellungshalle, die nur 20 Minuten vom internationalen Flughafen Wien entfernt ist.

Trust in more than 70 years of experience!

HESSE+CO was established in 1947 as a manufacturer of sheet metal working machines. Since 1980 we are specialized in dealing with new and second hand sheet metal processing machines and machine tools. We always have approximately 300 machines available in our 2.000 m² showroom, which is located only 20 minutes from the Vienna International Airport, waiting for your inspection.

www.hesse-maschinen.com

